

Product datasheet for **TA381491**

SIGLEC15 Rabbit Polyclonal Antibody

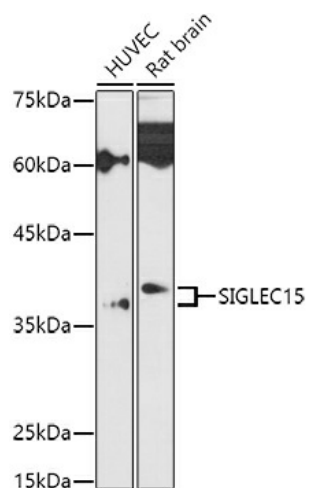
Product data:

Product Type:	Primary Antibodies
Applications:	ICC/IF, IHC, WB
Recommended Dilution:	WB,1:500 - 1:2000 IHC,1:50 - 1:200 IF,1:50 - 1:200
Reactivity:	Human, Rat
Host:	Rabbit
Isotype:	IgG
Clonality:	Polyclonal
Immunogen:	Recombinant protein of human Siglec-15.
Formulation:	Buffer: PBS with 0.02% sodium azide,50% glycerol,pH7.3.
Concentration:	lot specific
Purification:	Affinity purification
Conjugation:	Unconjugated
Storage:	Store at -20°C. Avoid freeze / thaw cycles.
Stability:	Shelf life: one year from despatch.
Gene Name:	sialic acid binding Ig like lectin 15
Database Link:	Entrez Gene 284266 Human Q6ZMC9
Background:	SIGLEC15 (Sialic Acid Binding Ig Like Lectin 15) is a Protein Coding gene. Diseases associated with SIGLEC15 include Osteoporosis, Juvenile and Osteoporosis. Among its related pathways are Innate Immune System and RET signaling. An important paralog of this gene is SIGLEC1.
Synonyms:	CD33L3; HsT1361; SIGLEC-15

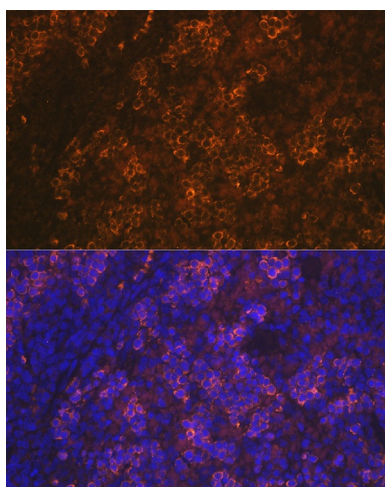


[View online »](#)

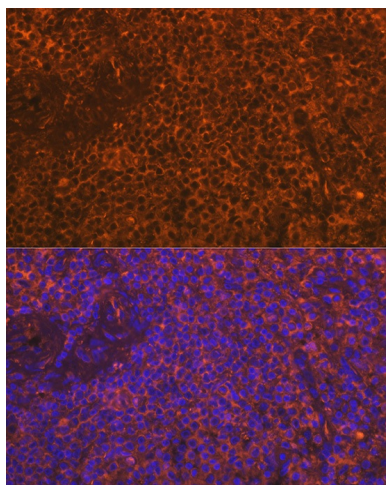
Product images:



Western blot analysis of extracts of various cell lines, using SIGLEC15 antibody (TA381491) at 1:1000 dilution. | Secondary antibody: HRP Goat Anti-Rabbit IgG (H+L) at 1:10000 dilution. | Lysates/proteins: 25ug per lane. | Blocking buffer: 3% nonfat dry milk in TBST. | Detection: ECL Basic Kit . | Exposure time: 180s.



Immunofluorescence analysis of Rat spleen cells using Siglec-15 antibody (TA381491) at dilution of 1:100. Blue: DAPI for nuclear staining.



Immunofluorescence analysis of Human spleen cells using Siglec-15 antibody (TA381491) at dilution of 1:100. Blue: DAPI for nuclear staining.