

Product datasheet for **TA381488S**

Sialoadhesin (SIGLEC1) Rabbit Polyclonal Antibody

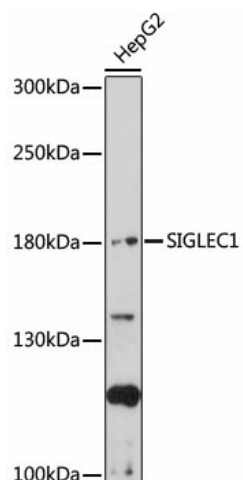
Product data:

Product Type:	Primary Antibodies
Applications:	ELISA, WB
Recommended Dilution:	WB, 1:500 - 1:2000 ELISA, Recommended starting concentration is 1 µg/mL. Please optimize the concentration based on your specific assay requirements.
Reactivity:	Human
Host:	Rabbit
Isotype:	IgG
Clonality:	Polyclonal
Formulation:	Buffer: PBS with 0.02% sodium azide, 50% glycerol, pH 7.3.
Concentration:	lot specific
Purification:	Affinity purification
Conjugation:	Unconjugated
Storage:	Store at -20°C. Avoid freeze / thaw cycles.
Stability:	Shelf life: one year from despatch.
Predicted Protein Size:	183kDa
Gene Name:	sialic acid binding Ig like lectin 1
Database Link:	Entrez Gene 6614 Human Q9BZZ2
Background:	This gene encodes a member of the immunoglobulin superfamily. The encoded protein is a lectin-like adhesion molecule that binds glycoconjugate ligands on cell surfaces in a sialic acid-dependent manner. It is a type I transmembrane protein expressed only by a subpopulation of macrophages and is involved in mediating cell-cell interactions. The protein plays an important role in multiple human diseases and bacterial and viral infections has been shown to enhance SARS-CoV-2 infection.
Synonyms:	CD169; dj1009E24.1; DKFZp667F058; FLJ00051; FLJ00055; FLJ00073; FLJ00411; FLJ32150; sialoadhesin; SIGLEC-1; SN



[View online »](#)

Product images:



Western blot analysis of lysates from HepG2 cells