

Product datasheet for **TA381476S**

Shh Rabbit Polyclonal Antibody

Product data:

Product Type:	Primary Antibodies
Applications:	ELISA, WB
Recommended Dilution:	WB, 1:500 - 1:1000 ELISA, Recommended starting concentration is 1 µg/mL. Please optimize the concentration based on your specific assay requirements.
Reactivity:	Human, Mouse, Rat
Host:	Rabbit
Isotype:	IgG
Clonality:	Polyclonal
Formulation:	Buffer: PBS with 0.02% sodium azide, 50% glycerol, pH 7.3.
Concentration:	lot specific
Purification:	Affinity purification
Conjugation:	Unconjugated
Storage:	Store at -20°C. Avoid freeze / thaw cycles.
Stability:	Shelf life: one year from despatch.
Predicted Protein Size:	48kDa
Gene Name:	sonic hedgehog
Database Link:	Entrez Gene 20423 Mouse Q62226



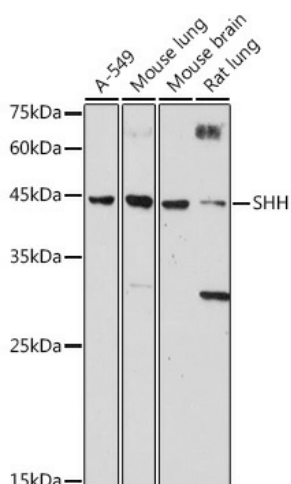
[View online »](#)

Background:

Enables glycosaminoglycan binding activity; laminin-1 binding activity; and patched binding activity. Involved in several processes, including hematopoietic or lymphoid organ development; positive regulation of T cell activation; and regulation of smooth muscle cell differentiation. Acts upstream of or within several processes, including animal organ development; limb morphogenesis; and neurogenesis. Located in several cellular components, including cell surface; extracellular space; and membrane raft. Is expressed in several structures, including alimentary system; central nervous system; genitourinary system; limb bud; and sensory organ. Used to study brachydactyly type A1 and holoprosencephaly 3. Human ortholog(s) of this gene implicated in several diseases, including Hirschsprung's disease; holoprosencephaly (multiple); hypoplastic or aplastic tibia with polydactyly; middle cerebral artery infarction; and polydactyly. Orthologous to human SHH (sonic hedgehog signaling molecule).

Synonyms:

HHG-1; HHG1; HLP3; HPE3; MCOPCB5; SMMCI; TPT; TPTPS

Product images:


Western blot analysis of various lysates using SHH Rabbit pAb ([TA381476]) at 1:1000 dilution. Secondary antibody: HRP-conjugated Goat anti-Rabbit IgG (H+L) (AS014) at 1:10000 dilution. Lysates/proteins: 25µg per lane. Blocking buffer: 3% nonfat dry milk in TBST. Detection: ECL Basic Kit (RM00020). Exposure time: 30s.