

Product datasheet for **TA381476**

Shh Rabbit Polyclonal Antibody

Product data:

Product Type:	Primary Antibodies
Applications:	WB
Recommended Dilution:	WB,1:500 - 1:2000
Reactivity:	Human, Mouse, Rat
Host:	Rabbit
Isotype:	IgG
Clonality:	Polyclonal
Immunogen:	Recombinant protein of Mouse SHH.
Formulation:	Buffer: PBS with 0.02% sodium azide,50% glycerol,pH7.3.
Concentration:	lot specific
Purification:	Affinity purification
Conjugation:	Unconjugated
Storage:	Store at -20°C. Avoid freeze / thaw cycles.
Stability:	Shelf life: one year from despatch.
Gene Name:	sonic hedgehog
Database Link:	Entrez Gene 20423 Mouse Q62226



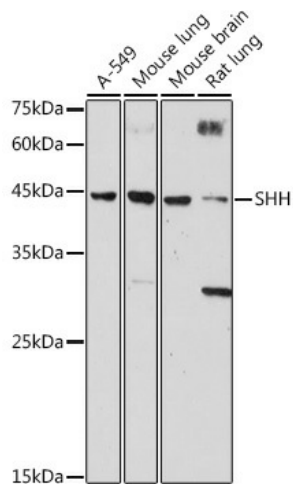
[View online »](#)

Background:

Mouse Sonic Hedgehog Homolog (SHH) belongs to a three-protein family called Hedgehog. The other two family members are Indian Hedgehog (IHH) and Desert Hedgehog (DHH). Hedgehog proteins are key signaling molecules in embryonic development. SHH is expressed in various embryonic tissues and plays critical roles in regulating the patterning of many systems, such as limbs and brain. SHH also plays an important role in adult, including the division of adult stem cells and the development of certain cancers and other diseases. Mouse Shh is synthesized as a 437 aa precursor that contains a 24 aa signal sequence and a 413 aa mature region. The mature region is autocatalytically processed into a nonglycosylated, 20 kDa, 174 aa N-terminal fragment (Shh-N), and a catalytic-processing, glycosylated, 34 kDa, 239 aa C-terminal fragment. The 20 kDa Shh-N fragment is the core of the active hedgehog molecule. Mouse Shh-N is 99%, 98%, and 100% aa identical to human, rat and gerbil Shh-N, respectively.

Synonyms:

HHG-1; HHG1; HLP3; HPE3; MCOPCB5; SMMCI; TPT; TPTPS

Product images:


Western blot analysis of extracts of various cell lines, using SHH antibody (TA381476) at 1:1000 dilution. | Secondary antibody: HRP Goat Anti-Rabbit IgG (H+L) at 1:10000 dilution. | Lysates/proteins: 25ug per lane. | Blocking buffer: 3% nonfat dry milk in TBST. | Detection: ECL Basic Kit . | Exposure time: 30s.