

Product datasheet for **TA381470S**

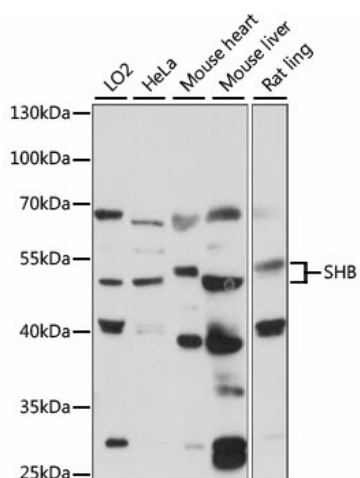
SHB Rabbit Polyclonal Antibody

Product data:

Product Type:	Primary Antibodies
Applications:	ELISA, WB
Recommended Dilution:	WB, 1:200 - 1:2000 ELISA, Recommended starting concentration is 1 µg/mL. Please optimize the concentration based on your specific assay requirements.
Reactivity:	Human, Mouse, Rat
Modifications:	Unmodified
Host:	Rabbit
Isotype:	IgG
Clonality:	Polyclonal
Formulation:	Buffer: PBS with 0.02% sodium azide, 50% glycerol, pH 7.3.
Concentration:	lot specific
Purification:	Affinity purification
Conjugation:	Unconjugated
Storage:	Store at -20°C. Avoid freeze / thaw cycles.
Stability:	Shelf life: one year from despatch.
Predicted Protein Size:	55kDa
Gene Name:	SH2 domain containing adaptor protein B
Database Link:	Entrez Gene 6461 Human Q15464
Background:	Enables phosphotyrosine residue binding activity. Predicted to be involved in several processes, including angiogenesis; apoptotic process; and signal transduction. Predicted to act upstream of or within several processes, including hematopoietic stem cell proliferation; negative regulation of oocyte maturation; and positive regulation of immune response. Located in cytoplasmic ribonucleoprotein granule; cytosol; and nucleoplasm.
Synonyms:	bA3J10.2; RP11-3J10.8


[View online »](#)

Product images:



Western blot analysis of various lysates using SHB Rabbit pAb (TA381470S) at 1:1000 dilution.
 Secondary antibody: HRP-conjugated Goat anti-Rabbit IgG (H+L) (AS014) at 1:10000 dilution.
 Lysates/proteins: 25µg per lane.
 Blocking buffer: 3% nonfat dry milk in TBST.
 Detection: ECL Basic Kit (RM00020).
 Exposure time: 90s.