

Product datasheet for **TA381469S**

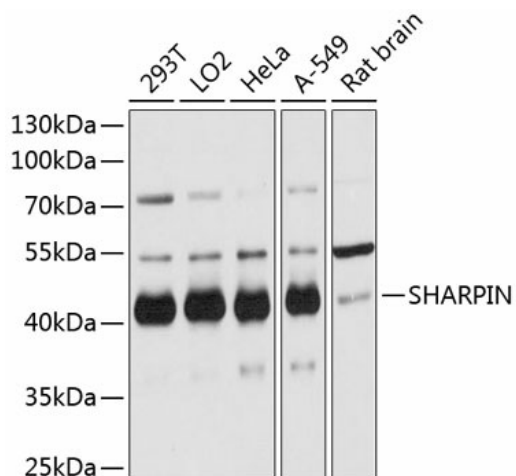
SHARPIN Rabbit Polyclonal Antibody

Product data:

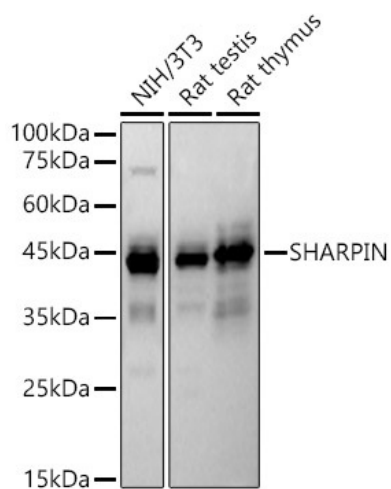
Product Type:	Primary Antibodies
Applications:	ELISA, WB
Recommended Dilution:	WB, 1:500 - 1:1000 ELISA, Recommended starting concentration is 1 µg/mL. Please optimize the concentration based on your specific assay requirements.
Reactivity:	Human, Mouse, Rat
Modifications:	Unmodified
Host:	Rabbit
Isotype:	IgG
Clonality:	Polyclonal
Formulation:	Buffer: PBS with 0.02% sodium azide, 50% glycerol, pH 7.3.
Concentration:	lot specific
Purification:	Affinity purification
Conjugation:	Unconjugated
Storage:	Store at -20°C. Avoid freeze / thaw cycles.
Stability:	Shelf life: one year from despatch.
Predicted Protein Size:	40kDa
Gene Name:	SHANK associated RH domain interactor
Database Link:	Entrez Gene 81858 Human Q9H0F6
Background:	Enables polyubiquitin modification-dependent protein binding activity. Involved in protein linear polyubiquitination and regulation of signal transduction. Located in cytosol. Part of LUBAC complex.
Synonyms:	DKFZp434N1923; hSIPL1; SIPL1



[View online »](#)

Product images:


Western blot analysis of various lysates



Western blot analysis of various lysates