

## Product datasheet for **TA381465S**

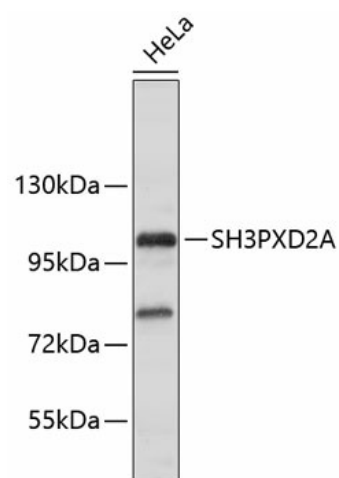
### **FISH (SH3PXD2A) Rabbit Polyclonal Antibody**

#### **Product data:**

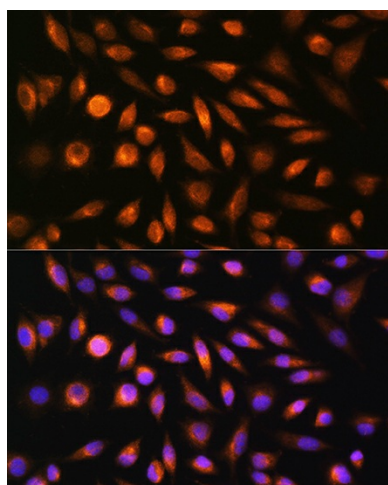
Product Type:	Primary Antibodies
Applications:	ELISA, ICC/IF, WB
Recommended Dilution:	WB, 1:500 - 1:2000 IF/ICC, 1:50 - 1:200 ELISA, Recommended starting concentration is 1 µg/mL. Please optimize the concentration based on your specific assay requirements.
Reactivity:	Human, Mouse
Modifications:	Unmodified
Host:	Rabbit
Isotype:	IgG
Clonality:	Polyclonal
Formulation:	Buffer: PBS with 0.02% sodium azide, 50% glycerol, pH 7.3.
Concentration:	lot specific
Purification:	Affinity purification
Conjugation:	Unconjugated
Storage:	Store at -20°C. Avoid freeze / thaw cycles.
Stability:	Shelf life: one year from despatch.
Predicted Protein Size:	125kDa
Gene Name:	SH3 and PX domains 2A
Database Link:	<a href="#">Entrez Gene 9644 Human Q5TCZ1</a>
Background:	Predicted to enable superoxide-generating NADPH oxidase activator activity. Involved in osteoclast fusion and superoxide metabolic process. Located in podosome.
Synonyms:	FISH; KIAA0418; SH3MD1

[View online »](#)

## Product images:



Western blot analysis of lysates from HeLa cells



Immunofluorescence analysis of L929 cells using SH3PXD2A Rabbit pAb ([TA381465]) at dilution of 1:100. Secondary antibody: Cy3-conjugated Goat anti-Rabbit IgG (H+L) (AS007) at 1:500 dilution. Blue: DAPI for nuclear staining.