

Product datasheet for **TA381465**

FISH (SH3PXD2A) Rabbit Polyclonal Antibody

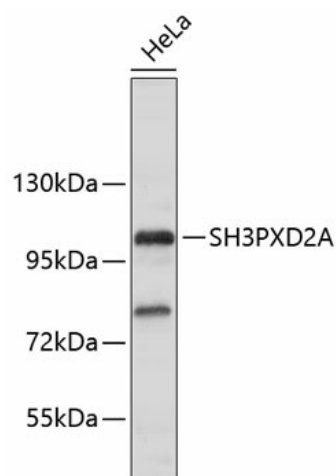
Product data:

Product Type:	Primary Antibodies
Applications:	ICC/IF, WB
Recommended Dilution:	WB,1:500 - 1:2000 IF,1:50 - 1:200
Reactivity:	Human, Mouse
Modifications:	Unmodified
Host:	Rabbit
Isotype:	IgG
Clonality:	Polyclonal
Immunogen:	A synthetic peptide of human SH3PXD2A
Formulation:	Buffer: PBS with 0.02% sodium azide,50% glycerol,pH7.3.
Concentration:	lot specific
Purification:	Affinity purification
Conjugation:	Unconjugated
Storage:	Store at -20°C. Avoid freeze / thaw cycles.
Stability:	Shelf life: one year from despatch.
Predicted Protein Size:	102kDa/121kDa/125kDa
Gene Name:	SH3 and PX domains 2A
Database Link:	Entrez Gene 9644 Human Q5TCZ1
Background:	Adapter protein involved in invadopodia and podosome formation, extracellular matrix degradation and invasiveness of some cancer cells. Binds matrix metalloproteinases (ADAMs, NADPH oxidases (NOXs and phosphoinositides. Acts as an organizer protein that allows NOX1- or NOX3-dependent reactive oxygen species (ROS generation and ROS localization. In association with ADAM12, mediates the neurotoxic effect of amyloid-beta peptide.
Synonyms:	FISH; KIAA0418; SH3MD1

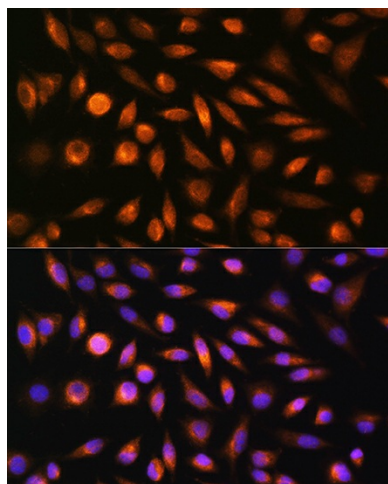


[View online »](#)

Product images:



Western blot analysis of extracts of HeLa cells, using SH3PXD2A antibody (TA381465). | Secondary antibody: HRP Goat Anti-Rabbit IgG (H+L) at 1:10000 dilution. | Lysates/proteins: 25ug per lane. | Blocking buffer: 3% nonfat dry milk in TBST.



Immunofluorescence analysis of L929 cells using SH3PXD2A Rabbit pAb (TA381465) at dilution of 1:100. Blue: DAPI for nuclear staining.