

## Product datasheet for **TA381463**

### **Bif (SH3GLB1) Rabbit Polyclonal Antibody**

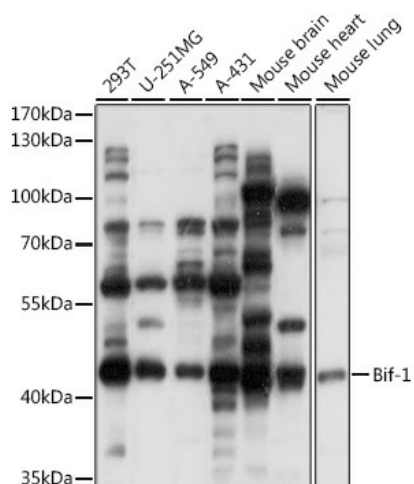
#### **Product data:**

<b>Product Type:</b>	Primary Antibodies
<b>Applications:</b>	WB
<b>Recommended Dilution:</b>	WB,1:500 - 1:2000
<b>Reactivity:</b>	Human, Mouse
<b>Modifications:</b>	Unmodified
<b>Host:</b>	Rabbit
<b>Isotype:</b>	IgG
<b>Clonality:</b>	Polyclonal
<b>Immunogen:</b>	Recombinant fusion protein containing a sequence corresponding to amino acids 120-365 of human Bif-1 (NP_057093.1).
<b>Formulation:</b>	Buffer: PBS with 0.02% sodium azide,50% glycerol,pH7.3.
<b>Concentration:</b>	lot specific
<b>Purification:</b>	Affinity purification
<b>Conjugation:</b>	Unconjugated
<b>Storage:</b>	Store at -20°C. Avoid freeze / thaw cycles.
<b>Stability:</b>	Shelf life: one year from despatch.
<b>Predicted Protein Size:</b>	29kDa/40kDa/43kDa
<b>Gene Name:</b>	SH3 domain containing GRB2 like endophilin B1
<b>Database Link:</b>	<a href="#">Entrez Gene 51100 Human Q9Y371</a>
<b>Background:</b>	This gene encodes a SRC homology 3 domain-containing protein. The encoded protein interacts with the proapoptotic member of the Bcl-2 family, Bcl-2-associated X protein (Bax) and may be involved in regulating apoptotic signaling pathways. This protein may also be involved in maintaining mitochondrial morphology. Alternate splicing results in multiple transcript variants.
<b>Synonyms:</b>	Bif-1; CGI-61; dj612B15.2; KIAA0491



[View online »](#)

## Product images:



Western blot analysis of extracts of various cell lines, using Bif-1 antibody (TA381463) at 1:1000 dilution. | Secondary antibody: HRP Goat Anti-Rabbit IgG (H+L) at 1:10000 dilution. | Lysates/proteins: 25ug per lane. | Blocking buffer: 3% nonfat dry milk in TBST. | Detection: ECL Basic Kit. | Exposure time: 30s.