

## Product datasheet for **TA381461S**

### SH3GL3 Rabbit Polyclonal Antibody

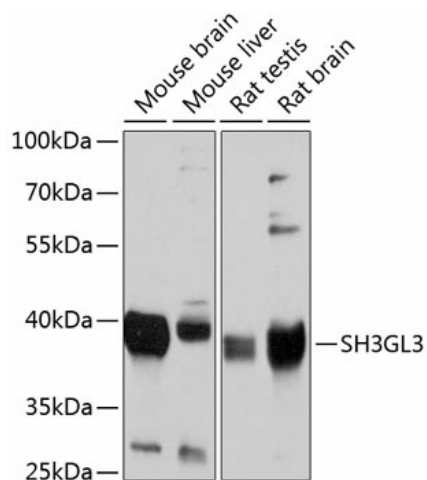
#### Product data:

Product Type:	Primary Antibodies
Applications:	WB
Recommended Dilution:	WB,1:500 - 1:4000 IHC,1:100 - 1:200
Reactivity:	Human, Mouse, Rat
Modifications:	Unmodified
Host:	Rabbit
Isotype:	IgG
Clonality:	Polyclonal
Immunogen:	Recombinant fusion protein containing a sequence corresponding to amino acids 1-270 of human SH3GL3 (NP_003018.3).
Formulation:	Buffer: PBS with 0.02% sodium azide,50% glycerol,pH7.3.
Concentration:	lot specific
Purification:	Affinity purification
Conjugation:	Unconjugated
Storage:	Store at -20°C. Avoid freeze / thaw cycles.
Stability:	Shelf life: one year from despatch.
Predicted Protein Size:	31kDa/38kDa/39kDa/40kDa
Gene Name:	SH3 domain containing GRB2 like endophilin A3
Database Link:	<a href="#">Entrez Gene 6457 Human Q99963</a>
Background:	Implicated in endocytosis. May recruit other proteins to membranes with high curvature (By similarity).
Synonyms:	CNSA3; EEN-2B-L3; EEN-B2; Endophilin-3; HsT19371; SH3D2C; SH3P13



[View online »](#)

## Product images:



Western blot analysis of extracts of various cell lines, using SH3GL3 antibody ([TA381461]) at 1:1000 dilution. | Secondary antibody: HRP Goat Anti-Rabbit IgG (H+L) at 1:10000 dilution. | Lysates/proteins: 25ug per lane. | Blocking buffer: 3% nonfat dry milk in TBST. | Detection: ECL Basic Kit . | Exposure time: 1s.