

## Product datasheet for **TA381448S**

### Sphingomyelin Synthase 1 (SGMS1) Rabbit Polyclonal Antibody

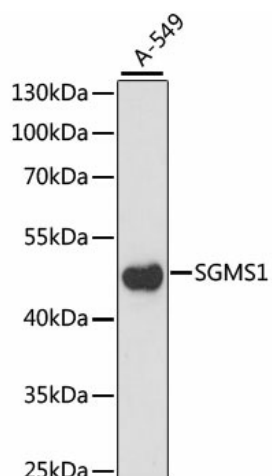
#### Product data:

Product Type:	Primary Antibodies
Applications:	ELISA, ICC/IF, WB
Recommended Dilution:	WB, 1:500 - 1:2000 IF/ICC, 1:50 - 1:200 ELISA, Recommended starting concentration is 1 µg/mL. Please optimize the concentration based on your specific assay requirements.
Reactivity:	Human, Rat
Modifications:	Unmodified
Host:	Rabbit
Isotype:	IgG
Clonality:	Polyclonal
Formulation:	Buffer: PBS with 0.02% sodium azide, 50% glycerol, pH 7.3.
Concentration:	lot specific
Purification:	Affinity purification
Conjugation:	Unconjugated
Storage:	Store at -20°C. Avoid freeze / thaw cycles.
Stability:	Shelf life: one year from despatch.
Predicted Protein Size:	49kDa
Gene Name:	sphingomyelin synthase 1
Database Link:	<a href="#">Entrez Gene 259230 Human Q86VZ5</a>
Background:	The protein encoded by this gene is predicted to be a five-pass transmembrane protein. This gene may be predominately expressed in brain.
Synonyms:	hmob33; MGC17342; MOB; MOB1; SMS1; TMEM23

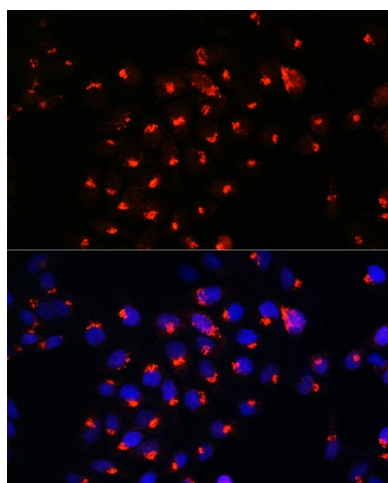


[View online »](#)

## Product images:



Western blot analysis of lysates from A-549 cells



Immunofluorescence analysis of HeLa cells using SGMS1 Rabbit pAb ([TA381448]) at dilution of 1:100. Secondary antibody: Cy3-conjugated Goat anti-Rabbit IgG (H+L) (AS007) at 1:500 dilution. Blue: DAPI for nuclear staining.