

Product datasheet for **TA381448**

Spingomyelin Synthase 1 (SGMS1) Rabbit Polyclonal Antibody

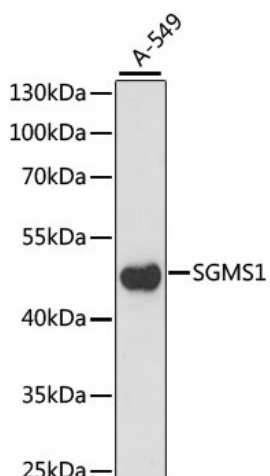
Product data:

Product Type:	Primary Antibodies
Applications:	ICC/IF, WB
Recommended Dilution:	WB,1:500 - 1:2000 IF,1:50 - 1:200
Reactivity:	Human, Rat
Modifications:	Unmodified
Host:	Rabbit
Isotype:	IgG
Clonality:	Polyclonal
Immunogen:	Recombinant fusion protein containing a sequence corresponding to amino acids 1-134 of human SGMS1 (NP_671512.1).
Formulation:	Buffer: PBS with 0.02% sodium azide,50% glycerol,pH7.3.
Concentration:	lot specific
Purification:	Affinity purification
Conjugation:	Unconjugated
Storage:	Store at -20°C. Avoid freeze / thaw cycles.
Stability:	Shelf life: one year from despatch.
Predicted Protein Size:	25kDa/49kDa
Gene Name:	sphingomyelin synthase 1
Database Link:	Entrez Gene 259230 Human Q86VZ5
Background:	The protein encoded by this gene is predicted to be a five-pass transmembrane protein. This gene may be predominately expressed in brain.
Synonyms:	hmob33; MGC17342; MOB; MOB1; SMS1; TMEM23

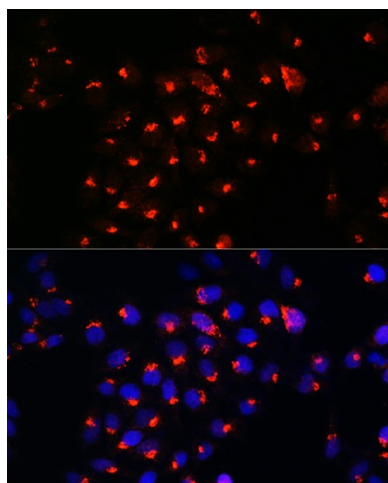


[View online »](#)

Product images:



Western blot analysis of extracts of A-549 cells, using SGMS1 antibody (TA381448) at 1:1000 dilution. | Secondary antibody: HRP Goat Anti-Rabbit IgG (H+L) at 1:10000 dilution. | Lysates/proteins: 25ug per lane. | Blocking buffer: 3% nonfat dry milk in TBST. | Detection: ECL Enhanced Kit. | Exposure time: 930s.



Immunofluorescence analysis of HeLa cells using SGMS1 Rabbit pAb (TA381448) at dilution of 1:100. Blue: DAPI for nuclear staining.