

## Product datasheet for **TA381444**

### SGCZ Rabbit Polyclonal Antibody

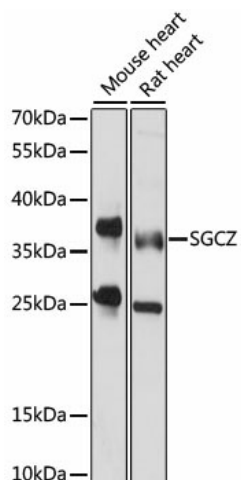
#### Product data:

Product Type:	Primary Antibodies
Applications:	WB
Recommended Dilution:	WB,1:500 - 1:2000
Reactivity:	Mouse, Rat
Modifications:	Unmodified
Host:	Rabbit
Isotype:	IgG
Clonality:	Polyclonal
Immunogen:	Recombinant fusion protein containing a sequence corresponding to amino acids 83-312 of human SGCZ (NP_631906.2).
Formulation:	Buffer: PBS with 0.02% sodium azide,50% glycerol,pH7.3.
Concentration:	lot specific
Purification:	Affinity purification
Conjugation:	Unconjugated
Storage:	Store at -20°C. Avoid freeze / thaw cycles.
Stability:	Shelf life: one year from despatch.
Predicted Protein Size:	32kDa/34kDa
Gene Name:	sarcoglycan zeta
Database Link:	<a href="#">Q96LD1</a>
Background:	The zeta-sarcoglycan gene measures over 465 kb and localizes to 8p22. This protein is part of the sarcoglycan complex, a group of 6 proteins. The sarcoglycans are all N-glycosylated transmembrane proteins with a short intra-cellular domain, a single transmembrane region and a large extra-cellular domain containing a carboxyl-terminal cluster with several conserved cysteine residues. The sarcoglycan complex is part of the dystrophin-associated glycoprotein complex (DGC), which bridges the inner cytoskeleton and the extra-cellular matrix.
Synonyms:	MGC149397; zeta-sarcoglycan; Zeta-SG; ZSG1



[View online »](#)

## Product images:



Western blot analysis of extracts of various cell lines, using SGCZ antibody (TA381444) at 1000 dilution. | Secondary antibody: HRP Goat Anti-Rabbit IgG (H+L) at 1:10000 dilution. | Lysates/proteins: 25ug per lane. | Blocking buffer: 3% nonfat dry milk in TBST. | Detection: ECL Basic Kit. | Exposure time: 15s.