

Product datasheet for **TA381441**

delta Sarcoglycan (SGCD) Rabbit Polyclonal Antibody

Product data:

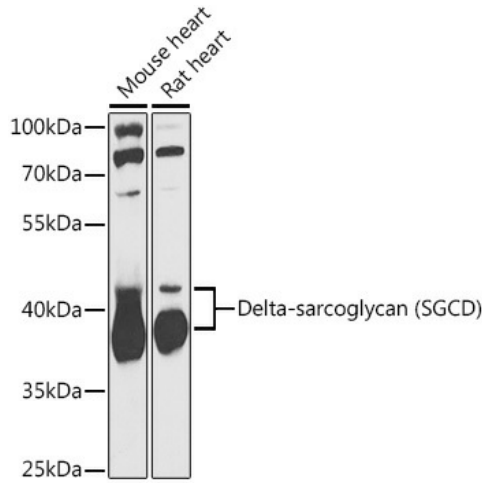
Product Type:	Primary Antibodies
Applications:	ICC/IF, WB
Recommended Dilution:	WB,1:500 - 1:2000 IF,1:50 - 1:200
Reactivity:	Human, Mouse, Rat
Modifications:	Unmodified
Host:	Rabbit
Isotype:	IgG
Clonality:	Polyclonal
Immunogen:	Recombinant fusion protein containing a sequence corresponding to amino acids 61-290 of human Delta-sarcoglycan (Delta-sarcoglycan (SGCD)) (NP_000328.2).
Formulation:	Buffer: PBS with 0.02% sodium azide,50% glycerol,pH7.3.
Concentration:	lot specific
Purification:	Affinity purification
Conjugation:	Unconjugated
Storage:	Store at -20°C. Avoid freeze / thaw cycles.
Stability:	Shelf life: one year from despatch.
Predicted Protein Size:	28kDa/32kDa
Gene Name:	sarcoglycan delta
Database Link:	Entrez Gene 6444 Human Q92629
Background:	The protein encoded by this gene is one of the four known components of the sarcoglycan complex, which is a subcomplex of the dystrophin-glycoprotein complex (DGC). DGC forms a link between the F-actin cytoskeleton and the extracellular matrix. This protein is expressed most abundantly in skeletal and cardiac muscle. Mutations in this gene have been associated with autosomal recessive limb-girdle muscular dystrophy and dilated cardiomyopathy. Alternatively spliced transcript variants encoding distinct isoforms have been observed for this gene.



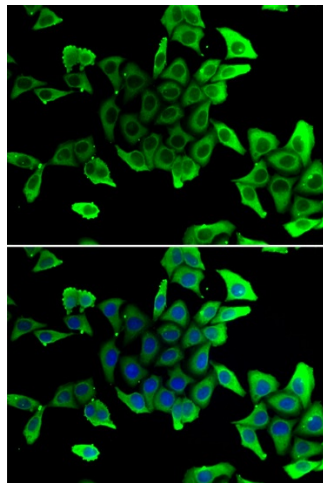
[View online »](#)

Synonyms: 35DAG; CMD1L; DAGD; delta-sarcoglycan; LGMD2F; MGC22567; SG-delta; SGCDP; SGD

Product images:



Western blot analysis of extracts of various cell lines, using Delta-sarcoglycan (Delta-sarcoglycan (SGCD)) antibody (TA381441) at 1:1000 dilution. | Secondary antibody: HRP Goat Anti-Rabbit IgG (H+L) at 1:10000 dilution. | Lysates/proteins: 25ug per lane. | Blocking buffer: 3% nonfat dry milk in TBST. | Detection: ECL Basic Kit . | Exposure time: 90s.



Immunofluorescence analysis of U2OS cells using Delta-sarcoglycan (Delta-sarcoglycan (SGCD)) antibody (TA381441). Blue: DAPI for nuclear staining.