

Product datasheet for **TA381439**

alpha Sarcoglycan (SGCA) Rabbit Polyclonal Antibody

Product data:

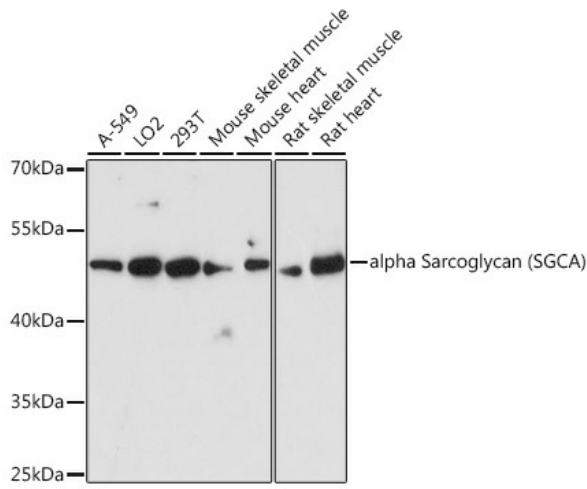
Product Type:	Primary Antibodies
Applications:	ICC/IF, WB
Recommended Dilution:	WB,1:500 - 1:2000 IF,1:50 - 1:200
Reactivity:	Human, Mouse, Rat
Modifications:	Unmodified
Host:	Rabbit
Isotype:	IgG
Clonality:	Polyclonal
Immunogen:	Recombinant fusion protein containing a sequence corresponding to amino acids 60-290 of human alpha Sarcoglycan (alpha Sarcoglycan (SGCA)) (NP_000014.1).
Formulation:	Buffer: PBS with 0.02% sodium azide,50% glycerol,pH7.3.
Concentration:	lot specific
Purification:	Affinity purification
Conjugation:	Unconjugated
Storage:	Store at -20°C. Avoid freeze / thaw cycles.
Stability:	Shelf life: one year from despatch.
Predicted Protein Size:	29kDa/42kDa
Gene Name:	sarcoglycan alpha
Database Link:	Entrez Gene 6442 Human Q16586
Background:	This gene encodes a component of the dystrophin-glycoprotein complex (DGC), which is critical to the stability of muscle fiber membranes and to the linking of the actin cytoskeleton to the extracellular matrix. Its expression is thought to be restricted to striated muscle. Mutations in this gene result in type 2D autosomal recessive limb-girdle muscular dystrophy. Multiple transcript variants encoding different isoforms have been found for this gene.



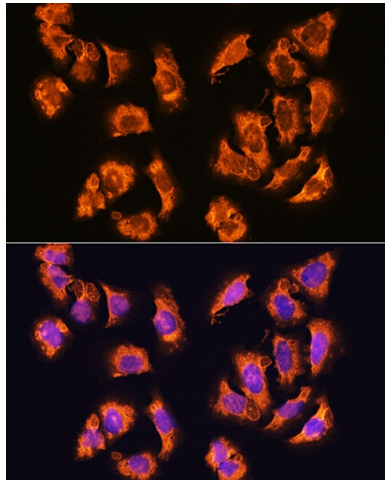
[View online »](#)

Synonyms: 50-DAG; 50DAG; A2; Adhalin; ADL; alpha-sarcoglycan; Alpha-SG; DAG2; DMDA2; Dystroglycan-2; LGMD2D; SCARMD1

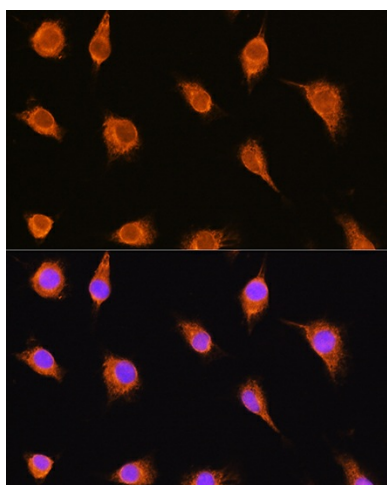
Product images:



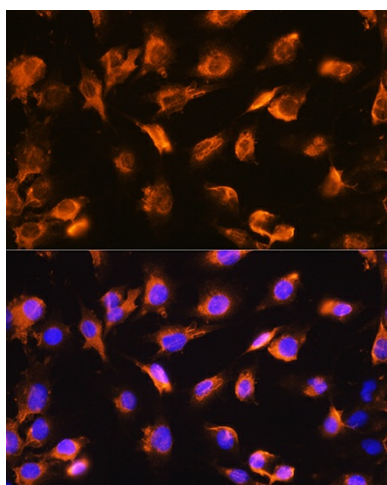
Western blot analysis of extracts of various cell lines, using alpha Sarcoglycan (alpha Sarcoglycan (SGCA)) antibody (TA381439) at 1:3000 dilution. | Secondary antibody: HRP Goat Anti-Rabbit IgG (H+L) at 1:10000 dilution. | Lysates/proteins: 25ug per lane. | Blocking buffer: 3% nonfat dry milk in TBST. | Detection: ECL Basic Kit . | Exposure time: 90s.



Immunofluorescence analysis of U2OS cells using alpha Sarcoglycan (alpha Sarcoglycan (SGCA)) Rabbit pAb (TA381439) at dilution of 1:100. Blue: DAPI for nuclear staining.



Immunofluorescence analysis of L929 cells using alpha Sarcoglycan (alpha Sarcoglycan (SGCA)) Rabbit pAb (TA381439) at dilution of 1:100. Blue: DAPI for nuclear staining.



Immunofluorescence analysis of C6 cells using alpha Sarcoglycan (alpha Sarcoglycan (SGCA)) Rabbit pAb (TA381439) at dilution of 1:100. Blue: DAPI for nuclear staining.