

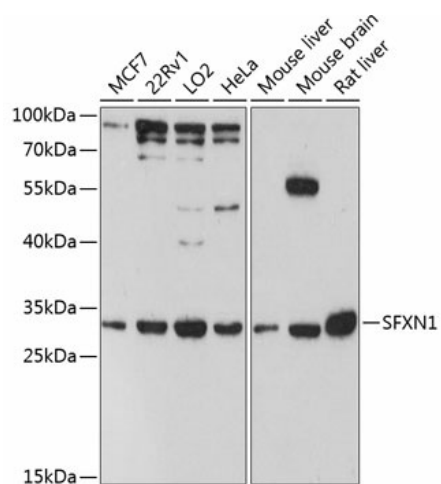
## Product datasheet for **TA381436**

### SFXN1 Rabbit Polyclonal Antibody

#### Product data:

Product Type:	Primary Antibodies
Applications:	ELISA, WB
Recommended Dilution:	WB, 1:500 - 1:2000 ELISA, Recommended starting concentration is 1 µg/mL. Please optimize the concentration based on your specific assay requirements.
Reactivity:	Human, Mouse, Rat
Modifications:	Unmodified
Host:	Rabbit
Isotype:	IgG
Clonality:	Polyclonal
Formulation:	Buffer: PBS with 0.05% proclin300, 50% glycerol, pH7.3.
Concentration:	lot specific
Purification:	Affinity purification
Conjugation:	Unconjugated
Storage:	Store at -20°C. Avoid freeze / thaw cycles.
Stability:	Shelf life: one year from despatch.
Predicted Protein Size:	36kDa
Gene Name:	sideroflexin 1
Database Link:	<a href="#">Entrez Gene 94081 Human</a> <a href="#">Q9H9B4</a>
Background:	Enables D-serine transmembrane transporter activity and L-serine transmembrane transporter activity. Involved in D-serine transport; L-serine transport; and serine import into mitochondrion. Located in mitochondrion. Is integral component of mitochondrial inner membrane.
Synonyms:	FLJ12876; TCC


[View online »](#)

**Product images:**


Western blot analysis of lysates from Mouse kidney