

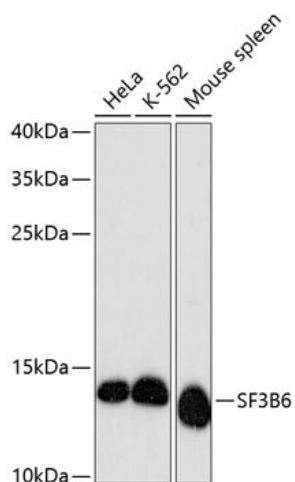
Product datasheet for **TA381425S**

SF3B14 (SF3B6) Rabbit Polyclonal Antibody

Product data:

Product Type:	Primary Antibodies
Applications:	ELISA, WB
Recommended Dilution:	WB, 1:500 - 1:2000 ELISA, Recommended starting concentration is 1 µg/mL. Please optimize the concentration based on your specific assay requirements.
Reactivity:	Human, Mouse
Modifications:	Unmodified
Host:	Rabbit
Isotype:	IgG
Clonality:	Polyclonal
Formulation:	Buffer: PBS with 0.02% sodium azide, 50% glycerol, pH 7.3.
Concentration:	lot specific
Purification:	Affinity purification
Conjugation:	Unconjugated
Storage:	Store at -20°C. Avoid freeze / thaw cycles.
Stability:	Shelf life: one year from despatch.
Predicted Protein Size:	15kDa
Gene Name:	splicing factor 3b subunit 6
Database Link:	Entrez Gene 51639 Human Q9Y3B4
Background:	This gene encodes a 14 kDa protein subunit of the splicing factor 3b complex. Splicing factor 3b associates with both the U2 and U11/U12 small nuclear ribonucleoprotein complexes (U2 snRNP) of spliceosomes. This 14 kDa protein interacts directly with subunit 1 of the splicing factor 3b complex. This 14 kDa protein also interacts directly with the adenosine that carries out the first transesterification step of splicing at the pre-mRNA branch site.


[View online »](#)

Product images:


Western blot analysis of various lysates using SF3B6 Rabbit pAb (TA381425S) at 1:3000 dilution. Secondary antibody: HRP-conjugated Goat anti-Rabbit IgG (H+L) (AS014) at 1:10000 dilution. Lysates/proteins: 25µg per lane. Blocking buffer: 3% nonfat dry milk in TBST. Detection: ECL Basic Kit (RM00020). Exposure time: 90s.