

Product datasheet for **TA381420S**

SAP155 (SF3B1) Rabbit Polyclonal Antibody

Product data:

Product Type:	Primary Antibodies
Applications:	ELISA, ICC/IF, WB
Recommended Dilution:	WB, 1:500 - 1:2000 IF/ICC, 1:50 - 1:200 ELISA, Recommended starting concentration is 1 µg/mL. Please optimize the concentration based on your specific assay requirements.
Reactivity:	Human, Mouse, Rat
Modifications:	Unmodified
Host:	Rabbit
Isotype:	IgG
Clonality:	Polyclonal
Formulation:	Buffer: PBS with 0.02% sodium azide, 50% glycerol, pH 7.3.
Concentration:	lot specific
Purification:	Affinity purification
Conjugation:	Unconjugated
Storage:	Store at -20°C. Avoid freeze / thaw cycles.
Stability:	Shelf life: one year from despatch.
Predicted Protein Size:	146kDa
Gene Name:	splicing factor 3b subunit 1
Database Link:	Entrez Gene 23451 Human O75533

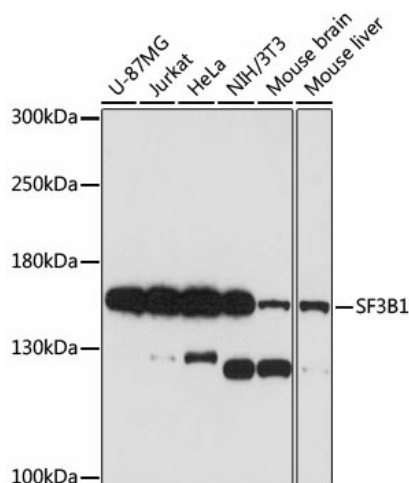
[View online »](#)

Background:

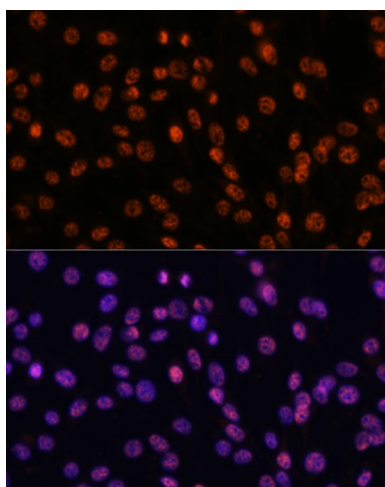
This gene encodes subunit 1 of the splicing factor 3b protein complex. Splicing factor 3b, together with splicing factor 3a and a 12S RNA unit, forms the U2 small nuclear ribonucleoproteins complex (U2 snRNP). The splicing factor 3b/3a complex binds pre-mRNA upstream of the intron's branch site in a sequence independent manner and may anchor the U2 snRNP to the pre-mRNA. Splicing factor 3b is also a component of the minor U12-type spliceosome. The carboxy-terminal two-thirds of subunit 1 have 22 non-identical, tandem HEAT repeats that form rod-like, helical structures. Alternative splicing results in multiple transcript variants encoding different isoforms.

Synonyms:

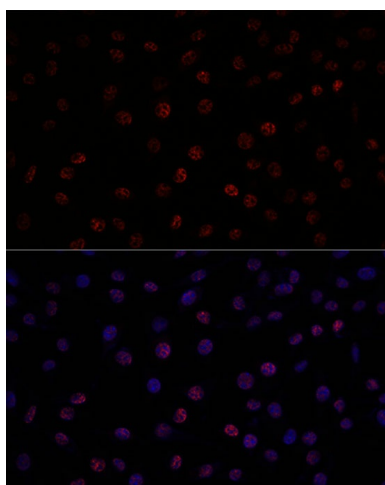
PRP10; PRPF10; SAP155; SF3b155

Product images:


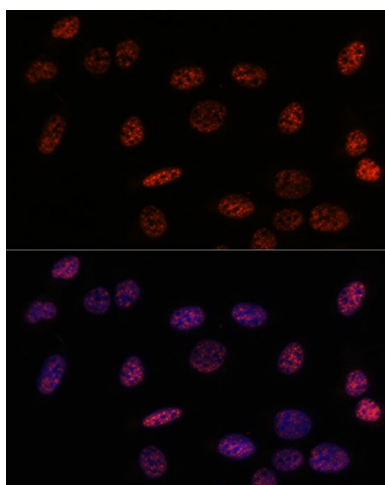
Western blot analysis of various lysates using SF3B1 Rabbit pAb ([TA381420]) at 1:1000 dilution incubated overnight at 4°C. Secondary antibody: HRP-conjugated Goat anti-Rabbit IgG (H+L) (AS014) at 1:10000 dilution. Lysates/proteins: 25 µg per lane. Blocking buffer: 3% nonfat dry milk in TBST. Detection: ECL Basic Kit (RM00020). Exposure time: 30s.



Immunofluorescence analysis of C6 using SF3B1 Rabbit pAb ([TA381420]) at dilution of d100 (40x lens). Blue: DAPI for nuclear staining.



Immunofluorescence analysis of L929 using SF3B1 Rabbit pAb ([TA381420]) at dilution of d100 (40x lens). Blue: DAPI for nuclear staining.



Immunofluorescence analysis of U-2OS using SF3B1 Rabbit pAb ([TA381420]) at dilution of d100 (40x lens). Blue: DAPI for nuclear staining.