

## Product datasheet for **TA381414S**

### SETD7 Rabbit Polyclonal Antibody

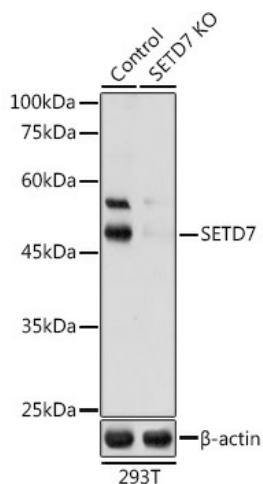
#### Product data:

Product Type:	Primary Antibodies
Applications:	ELISA, ICC/IF, WB
Recommended Dilution:	WB, 1:500 - 1:1000 IF/ICC, 1:50 - 1:200 ELISA, Recommended starting concentration is 1 µg/mL. Please optimize the concentration based on your specific assay requirements.
Reactivity:	Human, Mouse, Rat
Modifications:	Unmodified
Host:	Rabbit
Isotype:	IgG
Clonality:	Polyclonal
Formulation:	Buffer: PBS with 0.02% sodium azide, 50% glycerol, pH 7.3.
Concentration:	lot specific
Purification:	Affinity purification
Conjugation:	Unconjugated
Storage:	Store at -20°C. Avoid freeze / thaw cycles.
Stability:	Shelf life: one year from despatch.
Predicted Protein Size:	41kDa
Gene Name:	SET domain containing lysine methyltransferase 7
Database Link:	<a href="#">Entrez Gene 80854 Human Q8WTS6</a>
Background:	Enables histone-lysine N-methyltransferase activity and p53 binding activity. Involved in peptidyl-lysine dimethylation and peptidyl-lysine monomethylation. Acts upstream of or within cellular response to DNA damage stimulus and heterochromatin organization. Located in chromosome and nucleolus.
Synonyms:	FLJ21193; H3-K4-HMTase; KIAA1717; KMT7; SET7; SET7/9; SET9



[View online »](#)

## Product images:



Western blot analysis of lysates from wild type (WT) and SETD7 knockout (KO) 293T cells