

## Product datasheet for **TA381410**

### SETD4 Rabbit Polyclonal Antibody

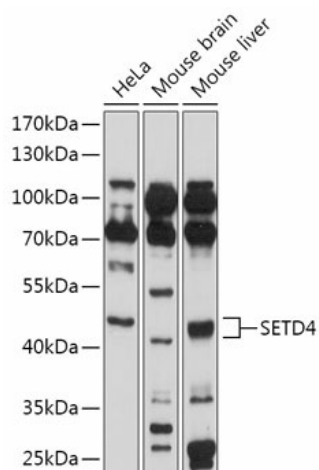
#### Product data:

Product Type:	Primary Antibodies
Applications:	WB
Recommended Dilution:	WB,1:500 - 1:2000
Reactivity:	Human, Mouse
Modifications:	Unmodified
Host:	Rabbit
Isotype:	IgG
Clonality:	Polyclonal
Immunogen:	Recombinant fusion protein containing a sequence corresponding to amino acids 210-300 of human SETD4 (NP_001007260).
Formulation:	Buffer: PBS with 0.02% sodium azide,50% glycerol,pH7.3.
Concentration:	lot specific
Purification:	Affinity purification
Conjugation:	Unconjugated
Storage:	Store at -20°C. Avoid freeze / thaw cycles.
Stability:	Shelf life: one year from despatch.
Gene Name:	SET domain containing 4
Database Link:	<a href="#">Entrez Gene 54093 Human Q9NVD3</a>
Background:	Histone-lysine N-methyltransferase that acts as a regulator of cell proliferation, cell differentiation and inflammatory response. Regulates the inflammatory response by mediating mono- and dimethylation of 'Lys-4' of histone H3 (H3K4me1 and H3K4me2, respectively, leading to activate the transcription of proinflammatory cytokines IL6 and TNF-alpha (By similarity. Also involved in the regulation of stem cell quiescence by catalyzing the trimethylation of 'Lys-20' of histone H4 (H4K20me3, thereby promoting heterochromatin formation. Involved in proliferation, migration, paracrine and myogenic differentiation of bone marrow mesenchymal stem cells (BMSCs (By similarity.
Synonyms:	C21orf18; C21orf27; OTTHUMP00000108890; OTTHUMP00000108895



[View online »](#)

## Product images:



Western blot analysis of extracts of various cell lines, using SETD4 antibody (TA381410) at 1:1000 dilution. | Secondary antibody: HRP Goat Anti-Rabbit IgG (H+L) at 1:10000 dilution. | Lysates/proteins: 25ug per lane. | Blocking buffer: 3% nonfat dry milk in TBST. | Detection: ECL Basic Kit. | Exposure time: 90s.