

Product datasheet for **TA381376**

GCET1 (SERPINA9) Rabbit Polyclonal Antibody

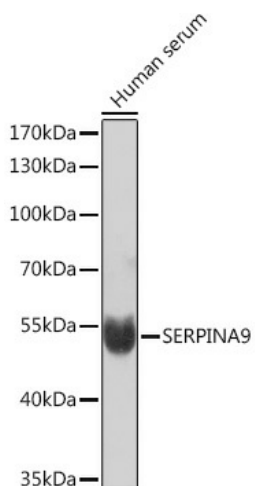
Product data:

Product Type:	Primary Antibodies
Applications:	WB
Recommended Dilution:	WB,1:500 - 1:2000
Reactivity:	Human
Modifications:	Unmodified
Host:	Rabbit
Isotype:	IgG
Clonality:	Polyclonal
Immunogen:	Recombinant fusion protein containing a sequence corresponding to amino acids 110-210 of human SERPINA9 (NP_783866.2).
Formulation:	Buffer: PBS with 0.02% sodium azide,50% glycerol,pH7.3.
Concentration:	lot specific
Purification:	Affinity purification
Conjugation:	Unconjugated
Storage:	Store at -20°C. Avoid freeze / thaw cycles.
Stability:	Shelf life: one year from despatch.
Predicted Protein Size:	21kDa/32kDa/37kDa/46kDa/48kDa
Gene Name:	serpin family A member 9
Database Link:	Entrez Gene 327657 Human Q86WD7
Background:	Protease inhibitor that inhibits trypsin and trypsin-like serine proteases (in vitro. Inhibits plasmin and thrombin with lower efficiency (in vitro.
Synonyms:	centerin; GCET1; MGC131906; SERPINA11; SERPINA11b



[View online »](#)

Product images:



Western blot analysis of extracts of Human serum, using SERPINA9 Rabbit pAb (TA381376) at 1:1000 dilution. | Secondary antibody: HRP Goat Anti-Rabbit IgG (H+L) at 1:10000 dilution. | Lysates/proteins: 25ug per lane. | Blocking buffer: 3% nonfat dry milk in TBST. | Detection: ECL Basic Kit . | Exposure time: 10s.