

## Product datasheet for **TA381370**

### alpha 1 Antichymotrypsin (SERPINA3) Rabbit Polyclonal Antibody

#### Product data:

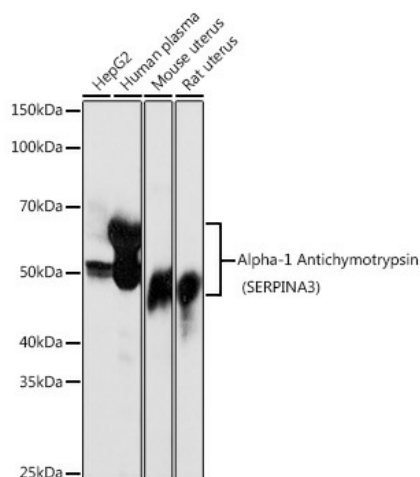
Product Type:	Primary Antibodies
Applications:	IHC, WB
Recommended Dilution:	WB,1:200 - 1:1000 IHC,1:50 - 1:200 IF,1:50 - 1:200
Reactivity:	Human
Modifications:	Unmodified
Host:	Rabbit
Isotype:	IgG
Clonality:	Polyclonal
Immunogen:	Recombinant fusion protein containing a sequence corresponding to amino acids 24-423 of human Alpha-1 Antichymotrypsin (Alpha-1 Antichymotrypsin (SERPINA3)) (NP_001076.2).
Formulation:	PBS with 0.09% Sodium azide,50% glycerol,pH7.3.
Concentration:	lot specific
Purification:	Affinity purification
Conjugation:	Unconjugated
Storage:	Store at -20°C. Avoid freeze / thaw cycles.
Stability:	Shelf life: one year from despatch.
Predicted Protein Size:	10kDa/24kDa/47kDa
Gene Name:	serpin family A member 3
Database Link:	<a href="#">Entrez Gene 12 Human P01011</a>
Background:	The protein encoded by this gene is a plasma protease inhibitor and member of the serine protease inhibitor class. Polymorphisms in this protein appear to be tissue specific and influence protease targeting. Variations in this protein's sequence have been implicated in Alzheimer's disease, and deficiency of this protein has been associated with liver disease. Mutations have been identified in patients with Parkinson disease and chronic obstructive pulmonary disease.



[View online »](#)

Synonyms: AACT; ACT; alpha-1-antichymotrypsin; GIG24; GIG25; MGC88254

### Product images:



Western blot analysis of extracts of various cell lines, using Alpha-1 Antichymotrypsin (Alpha-1 Antichymotrypsin (SERPINA3)) antibody (TA381370) at 1:1000 dilution. | Secondary antibody: HRP Goat Anti-Rabbit IgG (H+L) at 1:10000 dilution. | Lysates/proteins: 25ug per lane. | Blocking buffer: 3% nonfat dry milk in TBST. | Detection: ECL Basic Kit . | Exposure time: 30s.