

Product datasheet for **TA381365**

alpha 1 Antitrypsin (SERPINA1) Rabbit Polyclonal Antibody

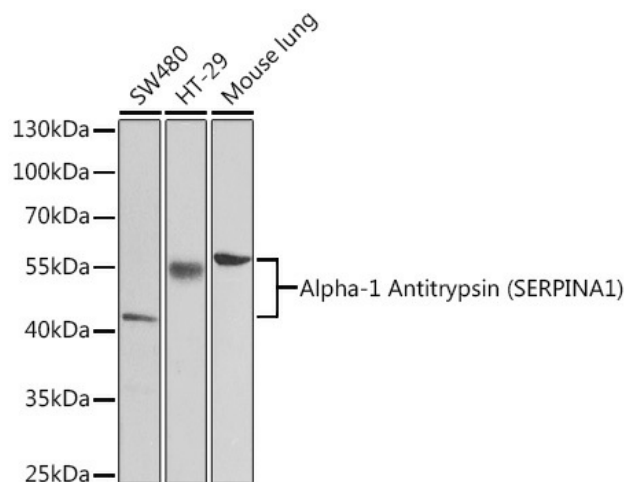
Product data:

Product Type:	Primary Antibodies
Applications:	ICC/IF, WB
Recommended Dilution:	WB,1:500 - 1:2000 IF,1:50 - 1:200
Reactivity:	Human, Mouse, Rat
Modifications:	Unmodified
Host:	Rabbit
Isotype:	IgG
Clonality:	Polyclonal
Immunogen:	Recombinant fusion protein containing a sequence corresponding to amino acids 25-315 of human Alpha-1 Antitrypsin (Alpha-1 Antitrypsin (SERPINA1)) (NP_000286.3).
Formulation:	Buffer: PBS with 0.02% sodium azide,50% glycerol,pH7.3.
Concentration:	lot specific
Purification:	Affinity purification
Conjugation:	Unconjugated
Storage:	Store at -20°C. Avoid freeze / thaw cycles.
Stability:	Shelf life: one year from despatch.
Predicted Protein Size:	34kDa/40kDa/46kDa
Gene Name:	serpin family A member 1
Database Link:	Entrez Gene 5265 Human P01009
Background:	The protein encoded by this gene is secreted and is a serine protease inhibitor whose targets include elastase, plasmin, thrombin, trypsin, chymotrypsin, and plasminogen activator. Defects in this gene can cause emphysema or liver disease. Several transcript variants encoding the same protein have been found for this gene.
Synonyms:	A1A; A1AT; AAT; Alpha-1-antiproteinase; alpha-1-antitrypsin; MGC9222; MGC23330; OTTHUMP00000197150; PI; P11; PRO2275

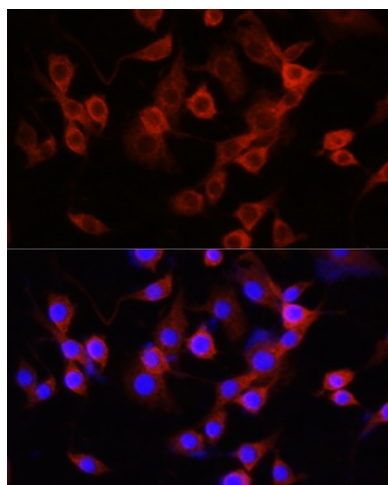


[View online »](#)

Product images:



Western blot analysis of extracts of various cell lines, using Alpha-1 Antitrypsin (Alpha-1 Antitrypsin (SERPINA1)) antibody (TA381365) at 1:1000 dilution. | Secondary antibody: HRP Goat Anti-Rabbit IgG (H+L) at 1:10000 dilution. | Lysates/proteins: 25ug per lane. | Blocking buffer: 3% nonfat dry milk in TBST.



Immunofluorescence analysis of PC-12 cells using Alpha-1 Antitrypsin (Alpha-1 Antitrypsin (SERPINA1)) antibody (TA381365) at dilution of 1:100 (40x lens). Blue: DAPI for nuclear staining.