

Product datasheet for **TA381364S**

SERINC1 Rabbit Polyclonal Antibody

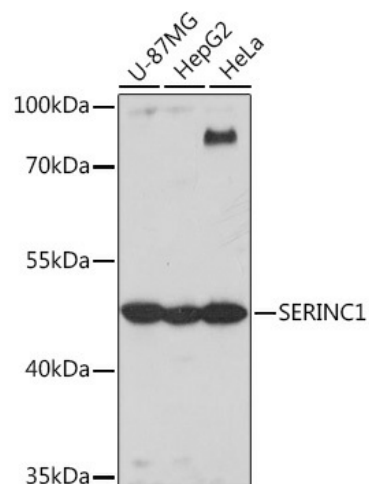
Product data:

Product Type:	Primary Antibodies
Applications:	ELISA, IHC, WB
Recommended Dilution:	WB, 1:500 - 1:2000 IHC-P, 1:50 - 1:200 ELISA, Recommended starting concentration is 1 µg/mL. Please optimize the concentration based on your specific assay requirements.
Reactivity:	Human, Mouse, Rat
Host:	Rabbit
Isotype:	IgG
Clonality:	Polyclonal
Formulation:	Buffer: PBS with 0.02% sodium azide, 50% glycerol, pH 7.3.
Concentration:	lot specific
Purification:	Affinity purification
Conjugation:	Unconjugated
Storage:	Store at -20°C. Avoid freeze / thaw cycles.
Stability:	Shelf life: one year from despatch.
Predicted Protein Size:	50kDa
Gene Name:	serine incorporator 1
Database Link:	Entrez Gene 57515 Human Q9NRX5
Background:	Predicted to enable protein-macromolecule adaptor activity. Predicted to be involved in several processes, including phosphatidylserine metabolic process; positive regulation of CDP-diacylglycerol-serine O-phosphatidyltransferase activity; and positive regulation of serine C-palmitoyltransferase activity. Predicted to be located in endoplasmic reticulum membrane and plasma membrane. Predicted to be active in membrane.
Synonyms:	KIAA1253; OTTHUMP00000017112; TDE1L; TDE2; TMS-2



[View online »](#)

Product images:



Western blot analysis of various lysates using SERINC1 Rabbit pAb (TA381364) at 1:1000 dilution.

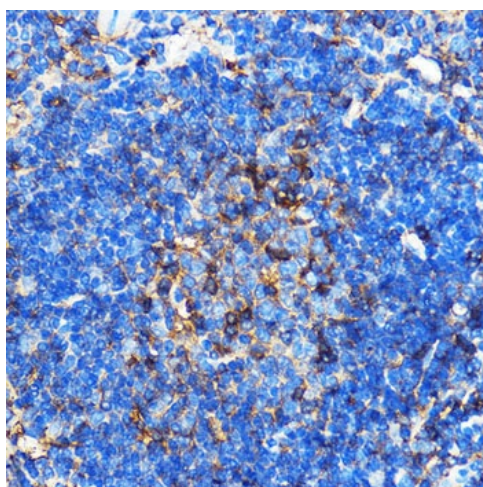
Secondary antibody: HRP-conjugated Goat anti-Rabbit IgG (H+L) (AS014) at 1:10000 dilution.

Lysates/proteins: 25µg per lane.

Blocking buffer: 3% nonfat dry milk in TBST.

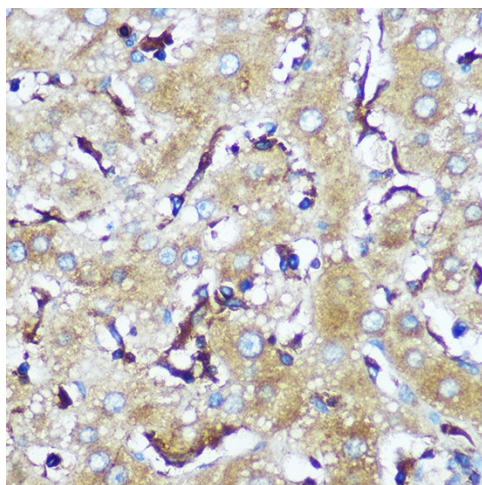
Detection: ECL Basic Kit (RM00020).

Exposure time: 10s.

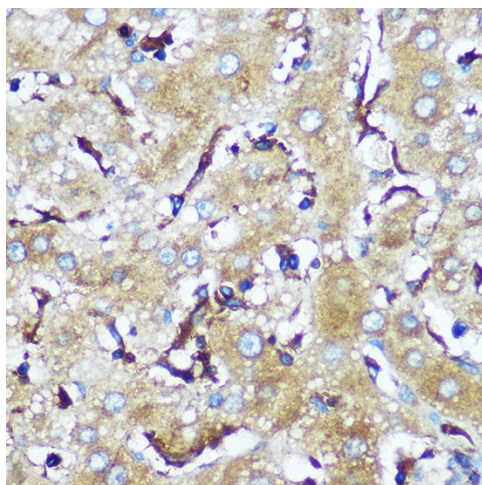


Immunohistochemistry analysis of paraffin-embedded Rat spleen using SERINC1 Rabbit pAb (TA381364) at dilution of 1:100 (40x lens).

Microwave antigen retrieval performed with 0.01M PBS Buffer (pH 7.2) prior to IHC staining.



Immunohistochemistry analysis of paraffin-embedded Mouse spleen using SERINC1 Rabbit pAb ([TA381364]) at dilution of 1:100 (40x lens). Microwave antigen retrieval performed with 0.01M PBS Buffer (pH 7.2) prior to IHC staining.



Immunohistochemistry analysis of paraffin-embedded Human liver using SERINC1 Rabbit pAb ([TA381364]) at dilution of 1:100 (40x lens). Microwave antigen retrieval performed with 0.01M PBS Buffer (pH 7.2) prior to IHC staining.