

Product datasheet for **TA381364**

SERINC1 Rabbit Polyclonal Antibody

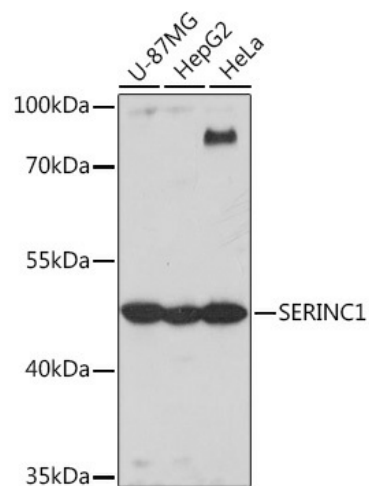
Product data:

Product Type:	Primary Antibodies
Applications:	IHC, WB
Recommended Dilution:	WB,1:500 - 1:2000 IHC,1:50 - 1:200
Reactivity:	Human, Mouse, Rat
Host:	Rabbit
Isotype:	IgG
Clonality:	Polyclonal
Immunogen:	Recombinant protein of human SERINC1.
Formulation:	Buffer: PBS with 0.02% sodium azide,50% glycerol,pH7.3.
Concentration:	lot specific
Purification:	Affinity purification
Conjugation:	Unconjugated
Storage:	Store at -20°C. Avoid freeze / thaw cycles.
Stability:	Shelf life: one year from despatch.
Gene Name:	serine incorporator 1
Database Link:	Entrez Gene 57515 Human Q9NRX5
Background:	Enhances the incorporation of serine into phosphatidylserine and sphingolipids.
Synonyms:	KIAA1253; OTTHUMP00000017112; TDE1L; TDE2; TMS-2



[View online »](#)

Product images:



Western blot analysis of extracts of various cell lines, using SERINC1 Rabbit pAb (TA381364) at 1:1000 dilution. | Secondary antibody: HRP Goat Anti-Rabbit IgG (H+L) at 1:10000 dilution. | Lysates/proteins: 25ug per lane. | Blocking buffer: 3% nonfat dry milk in TBST. | Detection: ECL Basic Kit . | Exposure time: 10s.