

Product datasheet for **TA381361**

Selenophosphate synthetase 1 (SEPHS1) Rabbit Polyclonal Antibody

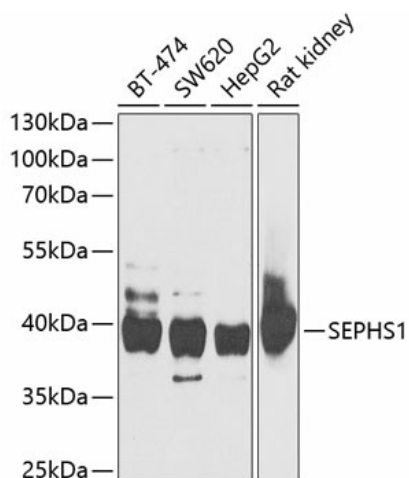
Product data:

Product Type:	Primary Antibodies
Applications:	ICC/IF, IHC, WB
Recommended Dilution:	WB,1:500 - 1:2000 IHC,1:50 - 1:200 IF,1:10 - 1:100
Reactivity:	Human, Rat
Modifications:	Unmodified
Host:	Rabbit
Isotype:	IgG
Clonality:	Polyclonal
Immunogen:	Recombinant fusion protein containing a sequence corresponding to amino acids 1-392 of human SEPHS1 (NP_036379.2).
Formulation:	Buffer: PBS with 0.02% sodium azide,50% glycerol,pH7.3.
Concentration:	lot specific
Purification:	Affinity purification
Conjugation:	Unconjugated
Storage:	Store at -20°C. Avoid freeze / thaw cycles.
Stability:	Shelf life: one year from despatch.
Predicted Protein Size:	35kDa/42kDa
Gene Name:	selenophosphate synthetase 1
Database Link:	Entrez Gene 22929 Human P49903
Background:	This gene encodes an enzyme that synthesizes selenophosphate from selenide and ATP. Selenophosphate is the selenium donor used to synthesize selenocysteine, which is co-translationally incorporated into selenoproteins at in-frame UGA codons.
Synonyms:	MGC4980; SELD; SPS; SPS1

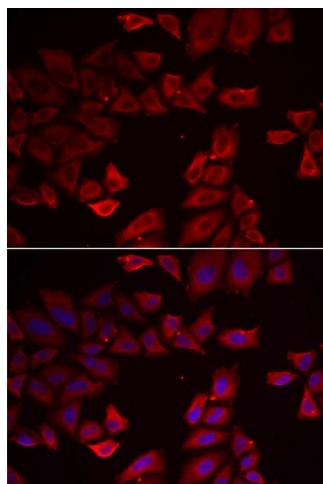


[View online »](#)

Product images:



Western blot analysis of extracts of various cell lines, using SEPHS1 antibody (TA381361) at 1:1000 dilution. | Secondary antibody: HRP Goat Anti-Rabbit IgG (H+L) at 1:10000 dilution. | Lysates/proteins: 25ug per lane. | Blocking buffer: 3% nonfat dry milk in TBST. | Detection: ECL Basic Kit. | Exposure time: 30s.



Immunofluorescence analysis of HeLa cells using SEPHS1 antibody (TA381361). Blue: DAPI for nuclear staining.