

## Product datasheet for **TA381356**

### SENP2 Rabbit Polyclonal Antibody

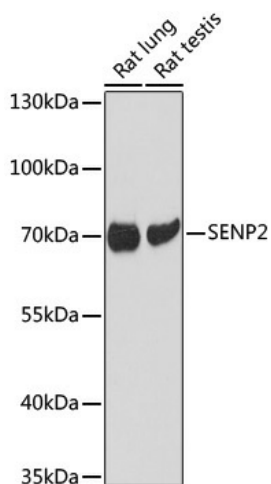
#### Product data:

|                         |  |
|-------------------------|--|
| Product Type:           | Primary Antibodies   |
| Applications:           | WB   |
| Recommended Dilution:   | WB,1:500 - 1:2000  |
| Reactivity:             | Mouse, Rat   |
| Host:                   | Rabbit   |
| Isotype:                | IgG  |
| Clonality:              | Polyclonal   |
| Immunogen:              | Recombinant protein of human SENP2.  |
| Formulation:            | Buffer: PBS with 0.02% sodium azide,50% glycerol,pH7.3.  |
| Concentration:          | lot specific   |
| Purification:           | Affinity purification  |
| Conjugation:            | Unconjugated   |
| Storage:                | Store at -20°C. Avoid freeze / thaw cycles.  |
| Stability:              | Shelf life: one year from despatch.  |
| Predicted Protein Size: | 68kDa  |
| Gene Name:              | SUMO1/sentrin/SMT3 specific peptidase 2  |
| Database Link:          | <a href="#">Q9HC62</a>   |
| Background:             | SUMO1 (UBL1; MIM 601912) is a small ubiquitin-like protein that can be covalently conjugated to other proteins. SENP2 is one of a group of enzymes that process newly synthesized SUMO1 into the conjugatable form and catalyze the deconjugation of SUMO1-containing species.[supplied by OMIM, Apr 2004] |
| Synonyms:               | Axam2; DKFZp762A2316; KIAA1331; SMT3IP2  |



[View online »](#)

## Product images:



Western blot analysis of extracts of various cell line, using SENP2 antibody (TA381356) at 1:1000 dilution. | Secondary antibody: HRP Goat Anti-Rabbit IgG (H+L) at 1:10000 dilution. | Lysates/proteins: 25ug per lane. | Blocking buffer: 3% nonfat dry milk in TBST. | Detection: ECL Basic Kit . | Exposure time: 90s.