

Product datasheet for **TA381348**

SEMA4C Rabbit Polyclonal Antibody

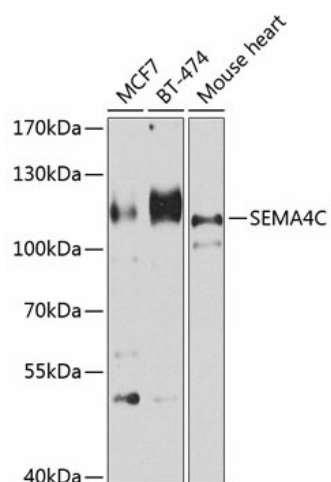
Product data:

Product Type:	Primary Antibodies
Applications:	WB
Recommended Dilution:	WB,1:500 - 1:2000
Reactivity:	Human, Mouse
Modifications:	Unmodified
Host:	Rabbit
Isotype:	IgG
Clonality:	Polyclonal
Immunogen:	Recombinant fusion protein containing a sequence corresponding to amino acids 749-833 of human SEMA4C (NP_060259.4).
Formulation:	Buffer: PBS with 0.02% sodium azide,50% glycerol,pH7.3.
Concentration:	lot specific
Purification:	Affinity purification
Conjugation:	Unconjugated
Storage:	Store at -20°C. Avoid freeze / thaw cycles.
Stability:	Shelf life: one year from despatch.
Predicted Protein Size:	92kDa
Gene Name:	semaphorin 4C
Database Link:	Entrez Gene 54910 Human Q9C0C4
Background:	Cell surface receptor for PLXNB2 that plays an important role in cell-cell signaling. PLXNB2 binding promotes downstream activation of RHOA and phosphorylation of ERBB2 at 'Tyr-1248'. Required for normal brain development, axon guidance and cell migration (By similarity. Probable signaling receptor which may play a role in myogenic differentiation through activation of the stress-activated MAPK cascade.
Synonyms:	FLJ20369; KIAA1739; M-SEMA-F; MGC126382; MGC126383; Semacl1; Semaf; SEMA1



[View online »](#)

Product images:



Western blot analysis of extracts of various cell lines, using SEMA4C antibody (TA381348) at 1:1000 dilution. | Secondary antibody: HRP Goat Anti-Rabbit IgG (H+L) at 1:10000 dilution. | Lysates/proteins: 25ug per lane. | Blocking buffer: 3% nonfat dry milk in TBST. | Detection: ECL Basic Kit . | Exposure time: 90s.