

## Product datasheet for **TA381344**

### Semaphorin 3c (SEMA3C) Rabbit Polyclonal Antibody

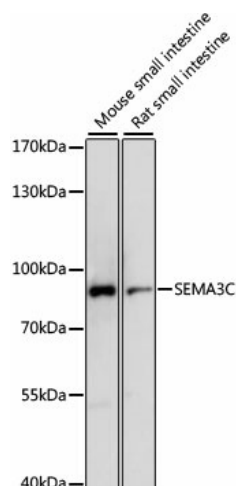
#### Product data:

Product Type:	Primary Antibodies
Applications:	ICC/IF, WB
Recommended Dilution:	WB, 1:200 - 1:2000 IF, 1:50 - 1:200
Reactivity:	Mouse, Human
Modifications:	Unmodified
Host:	Rabbit
Isotype:	IgG
Clonality:	Polyclonal
Immunogen:	Recombinant fusion protein containing a sequence corresponding to amino acids 21-330 of human SEMA3C (NP_006370.1).
Formulation:	Buffer: PBS with 0.02% sodium azide, 50% glycerol, pH 7.3.
Concentration:	lot specific
Purification:	Affinity purification
Conjugation:	Unconjugated
Storage:	Store at -20°C. Avoid freeze / thaw cycles.
Stability:	Shelf life: one year from despatch.
Predicted Protein Size:	26kDa/85kDa
Gene Name:	semaphorin 3C
Database Link:	<a href="#">Entrez Gene 10512 Human Q99985</a>
Background:	Binds to plexin family members and plays an important role in the regulation of developmental processes. Required for normal cardiovascular development during embryogenesis. Functions as attractant for growing axons, and thereby plays an important role in axon growth and axon guidance (By similarity).
Synonyms:	OTTHUMP00000207932; SEMAE; Semaphorin-E; SemE

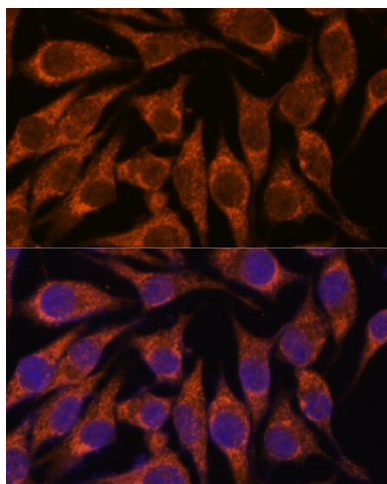


[View online »](#)

## Product images:



Western blot analysis of extracts of various cell lines, using SEMA3<sup>°</sup>C antibody (TA381344) at 1:1000 dilution. | Secondary antibody: HRP Goat Anti-Rabbit IgG (H+L) at 1:10000 dilution. | Lysates/proteins: 25ug per lane. | Blocking buffer: 3% nonfat dry milk in TBST. | Detection: ECL Basic Kit . | Exposure time: 10s.



Immunofluorescence analysis of L929 cells using SEMA3<sup>°</sup>C antibody (TA381344) at dilution of 1:100. Blue: DAPI for nuclear staining.