

Product datasheet for **TA381338S**

SEL1L Rabbit Polyclonal Antibody

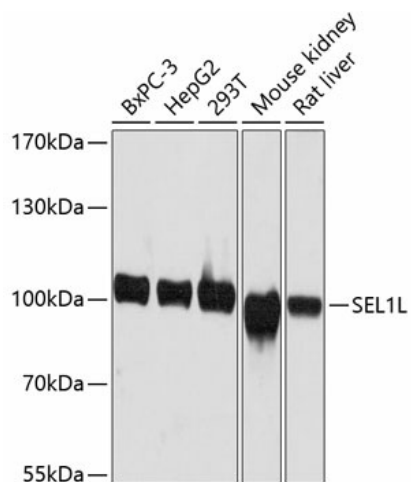
Product data:

Product Type:	Primary Antibodies
Applications:	ELISA, ICC/IF, WB
Recommended Dilution:	WB,1:500 - 1:2000 IF/ICC,1:50 - 1:200 ELISA,Recommended starting concentration is 1 µg/mL. Please optimize the concentration based on your specific assay requirements.
Reactivity:	Human, Mouse, Rat
Modifications:	Unmodified
Host:	Rabbit
Isotype:	IgG
Clonality:	Polyclonal
Formulation:	Buffer: PBS with 0.02% sodium azide,50% glycerol,pH7.3.
Concentration:	lot specific
Purification:	Affinity purification
Conjugation:	Unconjugated
Storage:	Store at -20°C. Avoid freeze / thaw cycles.
Stability:	Shelf life: one year from despatch.
Predicted Protein Size:	89kDa
Gene Name:	SEL1L ERAD E3 ligase adaptor subunit
Database Link:	Entrez Gene 6400 Human Q9UBV2
Background:	The protein encoded by this gene is part of a protein complex required for the retrotranslocation or dislocation of misfolded proteins from the endoplasmic reticulum lumen to the cytosol, where they are degraded by the proteasome in a ubiquitin-dependent manner. Alternatively spliced transcript variants encoding different isoforms have been found for this gene.
Synonyms:	IBD2; PRO1063; Sel-1L; SEL1-LIKE; SEL1L1; TSA305

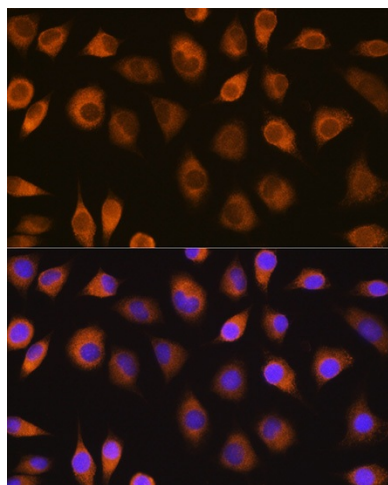


[View online »](#)

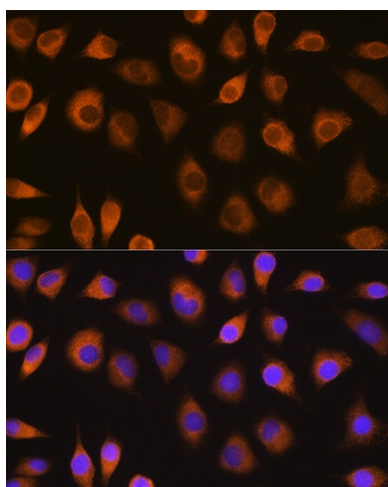
Product images:



Western blot analysis of various lysates



Immunofluorescence analysis of C6 cells using SEL1L Rabbit pAb ([TA381338]) at dilution of 1:100. Blue: DAPI for nuclear staining.



Immunofluorescence analysis of L929 cells using SEL1L Rabbit pAb ([TA381338]) at dilution of 1:100. Blue: DAPI for nuclear staining.