

## Product datasheet for **TA381338**

### SEL1L Rabbit Polyclonal Antibody

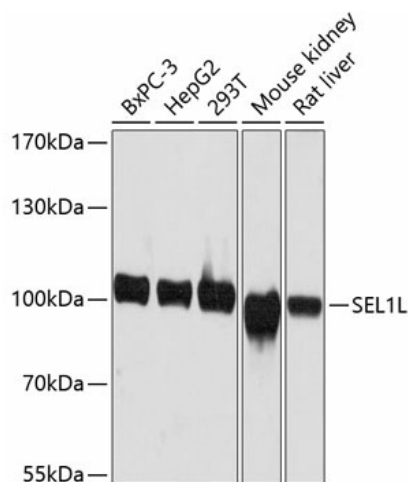
#### Product data:

Product Type:	Primary Antibodies
Applications:	ICC/IF, WB
Recommended Dilution:	WB,1:500 - 1:2000 IF,1:50 - 1:200
Reactivity:	Human, Mouse, Rat
Modifications:	Unmodified
Host:	Rabbit
Isotype:	IgG
Clonality:	Polyclonal
Immunogen:	Recombinant fusion protein containing a sequence corresponding to amino acids 22-190 of human SEL1L (NP_005056.3).
Formulation:	Buffer: PBS with 0.02% sodium azide,50% glycerol,pH7.3.
Concentration:	lot specific
Purification:	Affinity purification
Conjugation:	Unconjugated
Storage:	Store at -20°C. Avoid freeze / thaw cycles.
Stability:	Shelf life: one year from despatch.
Predicted Protein Size:	33kDa/88kDa
Gene Name:	SEL1L ERAD E3 ligase adaptor subunit
Database Link:	<a href="#">Entrez Gene 6400 Human Q9UBV2</a>
Background:	The protein encoded by this gene is part of a protein complex required for the retrotranslocation or dislocation of misfolded proteins from the endoplasmic reticulum lumen to the cytosol, where they are degraded by the proteasome in a ubiquitin-dependent manner. Alternatively spliced transcript variants encoding different isoforms have been found for this gene.
Synonyms:	IBD2; PRO1063; Sel-1L; SEL1-LIKE; SEL1L1; TSA305

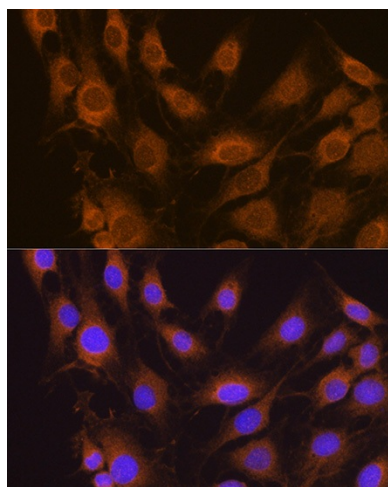


[View online »](#)

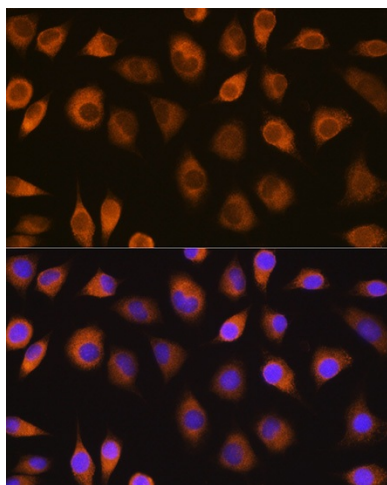
## Product images:



Western blot analysis of extracts of various cell lines, using SEL1L antibody (TA381338) at 1:3000 dilution. | Secondary antibody: HRP Goat Anti-Rabbit IgG (H+L) at 1:10000 dilution. | Lysates/proteins: 25ug per lane. | Blocking buffer: 3% nonfat dry milk in TBST. | Detection: ECL Basic Kit. | Exposure time: 20s.



Immunofluorescence analysis of C6 cells using SEL1L antibody (TA381338) at dilution of 1:100. Blue: DAPI for nuclear staining.



Immunofluorescence analysis of L929 cells using SEL1L antibody (TA381338) at dilution of 1:100. Blue: DAPI for nuclear staining.