

Product datasheet for **TA381324**

LZTR2 (SEC16B) Rabbit Polyclonal Antibody

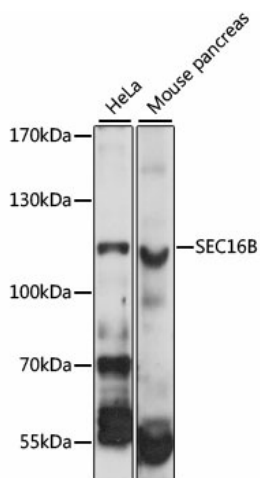
Product data:

Product Type:	Primary Antibodies
Applications:	WB
Recommended Dilution:	WB,1:500 - 1:2000
Reactivity:	Human, Mouse
Modifications:	Unmodified
Host:	Rabbit
Isotype:	IgG
Clonality:	Polyclonal
Immunogen:	Recombinant fusion protein containing a sequence corresponding to amino acids 250-550 of human SEC16B (NP_149118.2).
Formulation:	Buffer: PBS with 0.02% sodium azide,50% glycerol,pH7.3.
Concentration:	lot specific
Purification:	Affinity purification
Conjugation:	Unconjugated
Storage:	Store at -20°C. Avoid freeze / thaw cycles.
Stability:	Shelf life: one year from despatch.
Predicted Protein Size:	59kDa/70kDa/116kDa
Gene Name:	SEC16 homolog B, endoplasmic reticulum export factor
Database Link:	Entrez Gene 89866 Human Q96JE7
Background:	SEC16B is a mammalian homolog of <i>S. cerevisiae</i> Sec16 that is required for organization of transitional endoplasmic reticulum (ER) sites and protein export (Bhattacharyya and Glick, 2007 [PubMed 17192411]).[supplied by OMIM, Jun 2009]
Synonyms:	DKFZp686C2486; FLJ23871; FLJ25761; FLJ33652; FLJ36620; KIAA1928; LZTR2; PGPR-p117; RGPR; RGPR-p117; SEC16S



[View online »](#)

Product images:



Western blot analysis of extracts of various cell lines, using SEC16B antibody (TA381324) at 1:1000 dilution. | Secondary antibody: HRP Goat Anti-Rabbit IgG (H+L) at 1:10000 dilution. | Lysates/proteins: 25ug per lane. | Blocking buffer: 3% nonfat dry milk in TBST. | Detection: ECL Basic Kit . | Exposure time: 1s.