

Product datasheet for **TA381321**

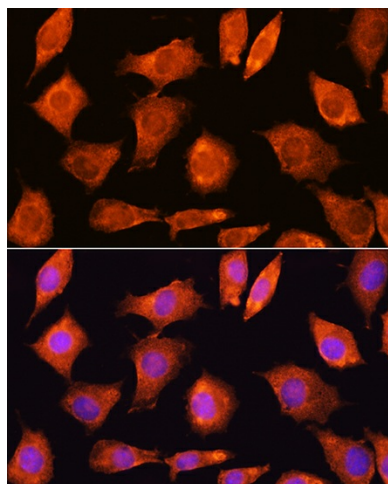
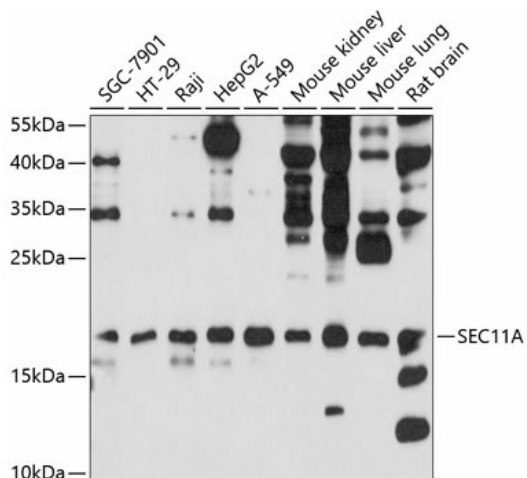
SEC11A Rabbit Polyclonal Antibody

Product data:

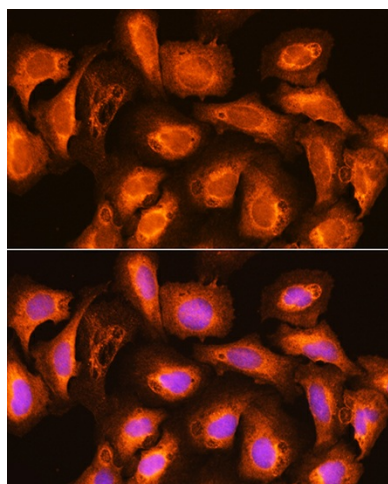
Product Type:	Primary Antibodies
Applications:	ICC/IF, WB
Recommended Dilution:	WB,1:500 - 1:2000 IF,1:50 - 1:200
Reactivity:	Human, Mouse, Rat
Modifications:	Unmodified
Host:	Rabbit
Isotype:	IgG
Clonality:	Polyclonal
Immunogen:	Recombinant fusion protein containing a sequence corresponding to amino acids 37-145 of human SEC11A (NP_055115.1).
Formulation:	Buffer: PBS with 0.02% sodium azide,50% glycerol,pH7.3.
Concentration:	lot specific
Purification:	Affinity purification
Conjugation:	Unconjugated
Storage:	Store at -20°C. Avoid freeze / thaw cycles.
Stability:	Shelf life: one year from despatch.
Predicted Protein Size:	17kDa/18kDa/20kDa/21kDa
Gene Name:	SEC11 homolog A, signal peptidase complex subunit
Database Link:	Entrez Gene 23478 Human P67812
Background:	This gene encodes a member of the peptidase S26B family. The encoded protein is an 18kDa subunit of the signal peptidase complex and has been linked to cell migration and invasion, gastric cancer and lymph node metastasis. Alternative splicing results in multiple transcript variants. A related pseudogene has been identified on chromosome 8.
Synonyms:	1810012E07Rik; SEC11L1; sid2895; SPC18; SPCS4A



[View online »](#)

Product images:


Immunofluorescence analysis of L929 cells using SEC11A Rabbit pAb (TA381321) at dilution of 1:100. Blue: DAPI for nuclear staining.



Immunofluorescence analysis of U2OS cells using SEC11A Rabbit pAb (TA381321) at dilution of 1:100. Blue: DAPI for nuclear staining.

