

Product datasheet for **TA381316S**

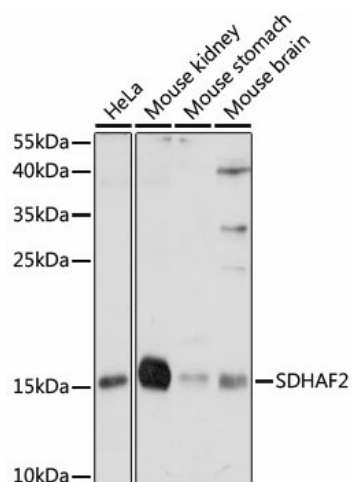
SDHAF2 Rabbit Polyclonal Antibody

Product data:

Product Type:	Primary Antibodies
Applications:	ELISA, WB
Recommended Dilution:	WB, 1:500 - 1:2000 ELISA, Recommended starting concentration is 1 µg/mL. Please optimize the concentration based on your specific assay requirements.
Reactivity:	Human, Mouse
Host:	Rabbit
Isotype:	IgG
Clonality:	Polyclonal
Formulation:	Buffer: PBS with 0.02% sodium azide, 50% glycerol, pH 7.3.
Concentration:	lot specific
Purification:	Affinity purification
Conjugation:	Unconjugated
Storage:	Store at -20°C. Avoid freeze / thaw cycles.
Stability:	Shelf life: one year from despatch.
Predicted Protein Size:	20kDa
Gene Name:	succinate dehydrogenase complex assembly factor 2
Database Link:	Entrez Gene 54949 Human Q9NX18
Background:	This gene encodes a mitochondrial assembly factor needed for the flavination of a succinate dehydrogenase complex subunit (SDHA), which is required for activity of the succinate dehydrogenase complex. Mutations in this gene are associated with paraganglioma.
Synonyms:	0610038F07Rik; AA407634; AW049997; RGD1309216



[View online »](#)

Product images:

Western blot analysis of various lysates using SDHAF2 Rabbit pAb (TA381316S) at 1:1000 dilution.

Secondary antibody: HRP-conjugated Goat anti-Rabbit IgG (H+L) (AS014) at 1:10000 dilution.

Lysates/proteins: 25µg per lane.

Blocking buffer: 3% nonfat dry milk in TBST.

Detection: ECL Basic Kit (RM00020).

Exposure time: 10s.