

Product datasheet for **TA381299**

epithelial Sodium Channel gamma (SCNN1G) Rabbit Polyclonal Antibody

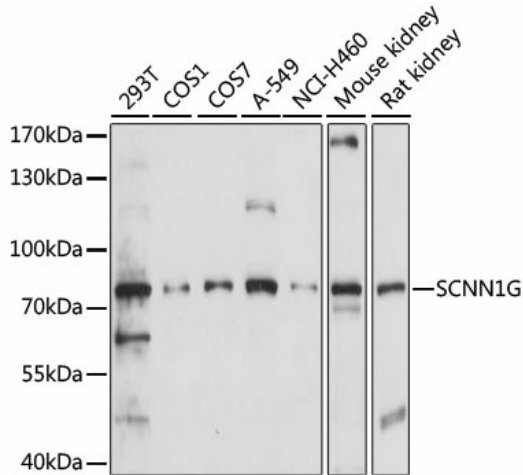
Product data:

Product Type:	Primary Antibodies
Applications:	ICC/IF, WB
Recommended Dilution:	WB,1:500 - 1:2000 IHC,1:100 - 1:200 IF,1:50 - 1:200
Reactivity:	Human, Mouse, Rat
Modifications:	Unmodified
Host:	Rabbit
Isotype:	IgG
Clonality:	Polyclonal
Immunogen:	Recombinant fusion protein containing a sequence corresponding to amino acids 100-250 of human SCNN1G (NP_001030.2).
Formulation:	Buffer: PBS with 0.02% sodium azide,50% glycerol,pH7.3.
Concentration:	lot specific
Purification:	Affinity purification
Conjugation:	Unconjugated
Storage:	Store at -20°C. Avoid freeze / thaw cycles.
Stability:	Shelf life: one year from despatch.
Predicted Protein Size:	74kDa
Gene Name:	sodium channel epithelial 1 gamma subunit
Database Link:	Entrez Gene 6340 Human P51170
Background:	Nonvoltage-gated, amiloride-sensitive, sodium channels control fluid and electrolyte transport across epithelia in many organs. These channels are heteromeric complexes consisting of 3 subunits: alpha, beta, and gamma. This gene encodes the gamma subunit, and mutations in this gene have been associated with Liddle syndrome.
Synonyms:	BESC3; ENaCg; ENaCgamma; Gamma-ENaC; Gamma-NaCH; PHA1; SCNEG

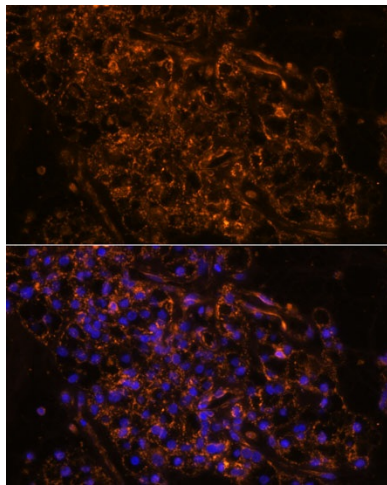


[View online »](#)

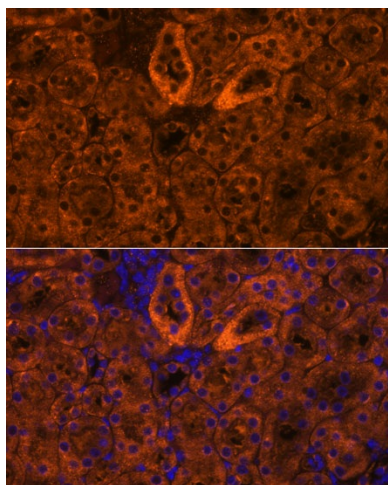
Product images:



Western blot analysis of extracts of various cell lines, using SCNN1G antibody (TA381299) at 1:1000 dilution. | Secondary antibody: HRP Goat Anti-Rabbit IgG (H+L) at 1:10000 dilution. | Lysates/proteins: 25ug per lane. | Blocking buffer: 3% nonfat dry milk in TBST. | Detection: ECL Basic Kit . | Exposure time: 30s.



Immunofluorescence analysis of human kidney cancer using SCNN1G antibody (TA381299) at dilution of 1:100. Blue: DAPI for nuclear staining.



Immunofluorescence analysis of mouse kidney using SCNN1G antibody (TA381299) at dilution of 1:100. Blue: DAPI for nuclear staining.