

## Product datasheet for TA381292

### Scn4b Rabbit Polyclonal Antibody

#### Product data:

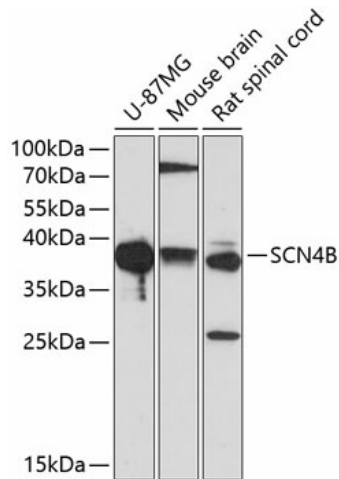
<b>Product Type:</b>	Primary Antibodies
<b>Applications:</b>	ELISA, WB
<b>Recommended Dilution:</b>	WB,1:500 – 1:2000 ELISA,Recommended starting concentration is 1 µg/mL. Please optimize the concentration based on your specific assay requirements.
<b>Reactivity:</b>	Human, Mouse, Rat
<b>Modifications:</b>	Unmodified
<b>Host:</b>	Rabbit
<b>Isotype:</b>	IgG
<b>Clonality:</b>	Polyclonal
<b>Formulation:</b>	Buffer: PBS with 0.02% sodium azide,50% glycerol,pH7.3.
<b>Concentration:</b>	lot specific
<b>Purification:</b>	Affinity purification
<b>Conjugation:</b>	Unconjugated
<b>Storage:</b>	Store at -20°C. Avoid freeze / thaw cycles.
<b>Stability:</b>	Shelf life: one year from despatch.
<b>Predicted Protein Size:</b>	25kDa
<b>Gene Name:</b>	sodium channel, type IV, beta
<b>Database Link:</b>	<a href="#">Entrez Gene 399548 Mouse Q7M729</a>



**Background:** Enables voltage-gated sodium channel activity. Acts upstream of or within sodium ion transmembrane transport. Located in intercalated disc. Is expressed in brain. Human ortholog(s) of this gene implicated in long QT syndrome 10. Orthologous to human SCN4B (sodium voltage-gated channel beta subunit 4).

**Synonyms:** SCN4B

**Product images:**



Western blot analysis of various lysates using SCN4B Rabbit pAb (TA381292) at 1:1000 dilution.

Secondary antibody: HRP-conjugated Goat anti-Rabbit IgG (H+L) at 1:10000 dilution.

Lysates/proteins: 25µg per lane.

Blocking buffer: 3% nonfat dry milk in TBST.

Detection: ECL Basic Kit .

Exposure time: 90s.