

Product datasheet for **TA381289S**

SCN2B Rabbit Polyclonal Antibody

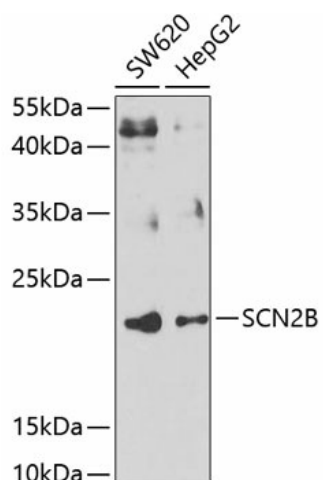
Product data:

Product Type:	Primary Antibodies
Applications:	WB
Recommended Dilution:	WB,1:500 - 1:2000
Reactivity:	Human
Modifications:	Unmodified
Host:	Rabbit
Isotype:	IgG
Clonality:	Polyclonal
Immunogen:	Recombinant fusion protein containing a sequence corresponding to amino acids 30-160 of human SCN2B (NP_004579.1).
Formulation:	Buffer: PBS with 0.02% sodium azide,50% glycerol,pH7.3.
Concentration:	lot specific
Purification:	Affinity purification
Conjugation:	Unconjugated
Storage:	Store at -20°C. Avoid freeze / thaw cycles.
Stability:	Shelf life: one year from despatch.
Predicted Protein Size:	24kDa
Gene Name:	sodium voltage-gated channel beta subunit 2
Database Link:	Entrez Gene 6327 Human O60939
Background:	The protein encoded by this gene is the beta 2 subunit of the type II voltage-gated sodium channel. The encoded protein is involved in cell-cell adhesion and cell migration. Defects in this gene can be a cause of Brugada Syndrome, atrial fibrillation, or sudden infant death syndrome.
Synonyms:	SCN2B



[View online »](#)

Product images:



Western blot analysis of extracts of various cell lines, using SCN2B antibody ([TA381289]) at 1:1000 dilution. | Secondary antibody: HRP Goat Anti-Rabbit IgG (H+L) at 1:10000 dilution. | Lysates/proteins: 25ug per lane. | Blocking buffer: 3% nonfat dry milk in TBST. | Detection: ECL Basic Kit . | Exposure time: 30s.