

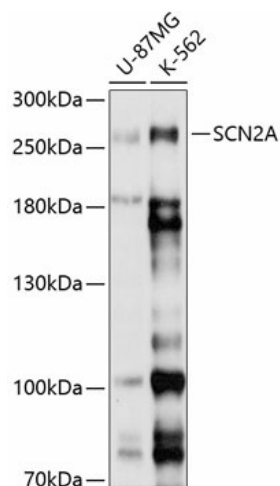
Product datasheet for **TA381288S**

SCN2A Rabbit Polyclonal Antibody

Product data:

Product Type:	Primary Antibodies
Applications:	ELISA, WB
Recommended Dilution:	WB, 1:1000 - 1:2000 ELISA, Recommended starting concentration is 1 µg/mL. Please optimize the concentration based on your specific assay requirements.
Reactivity:	Human
Modifications:	Unmodified
Host:	Rabbit
Isotype:	IgG
Clonality:	Polyclonal
Formulation:	Buffer: PBS with 0.02% sodium azide, 50% glycerol, pH 7.3.
Concentration:	lot specific
Purification:	Affinity purification
Conjugation:	Unconjugated
Storage:	Store at -20°C. Avoid freeze / thaw cycles.
Stability:	Shelf life: one year from despatch.
Predicted Protein Size:	228kDa
Gene Name:	sodium voltage-gated channel alpha subunit 2
Database Link:	Entrez Gene 6326 Human Q99250
Background:	Voltage-gated sodium channels are transmembrane glycoprotein complexes composed of a large alpha subunit with four repeat domains, each of which is composed of six membrane-spanning segments, and one or more regulatory beta subunits. Voltage-gated sodium channels function in the generation and propagation of action potentials in neurons and muscle. This gene encodes one member of the sodium channel alpha subunit gene family. Allelic variants of this gene are associated with seizure disorders and autism spectrum disorder. Alternative splicing results in multiple transcript variants.
Synonyms:	BFIC3; HBA; HBSCI; HBSCII; Na(v)1.2; NAC2; Nav1.2; OTTHUMP00000041050; SCN2A1; SCN2A2


[View online »](#)

Product images:


Western blot analysis of various lysates using SCN2A Rabbit pAb (TA381288) at 1:1000 dilution.

Secondary antibody: HRP-conjugated Goat anti-Rabbit IgG (H+L) (AS014) at 1:10000 dilution.

Lysates/proteins: 25µg per lane.

Blocking buffer: 3% nonfat dry milk in TBST.

Detection: ECL Basic Kit (RM00020).

Exposure time: 5s.