

Product datasheet for **TA381283**

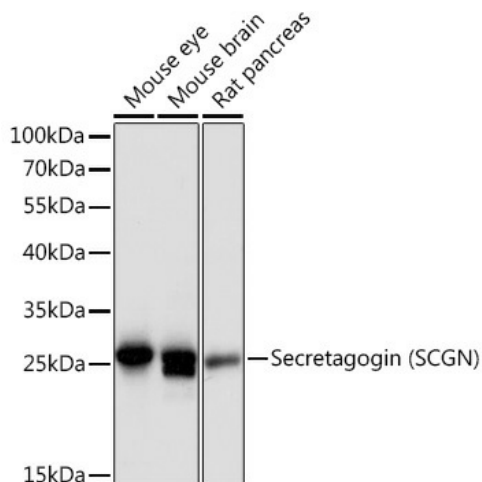
SCGN Rabbit Polyclonal Antibody

Product data:

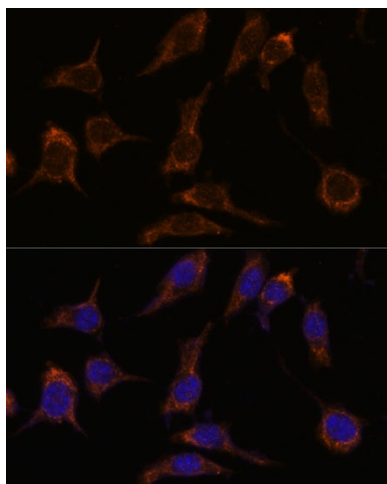
Product Type:	Primary Antibodies
Applications:	ICC/IF, IHC, WB
Recommended Dilution:	WB,1:500 - 1:2000 IHC,1:50 - 1:200 IF,1:50 - 1:200
Reactivity:	Human, Mouse, Rat
Modifications:	Unmodified
Host:	Rabbit
Isotype:	IgG
Clonality:	Polyclonal
Immunogen:	Recombinant fusion protein containing a sequence corresponding to amino acids 1-276 of human Secretagogen (Secretagogen (SCGN)) (NP_008929.2).
Formulation:	Buffer: PBS with 0.02% sodium azide,50% glycerol,pH7.3.
Concentration:	lot specific
Purification:	Affinity purification
Conjugation:	Unconjugated
Storage:	Store at -20°C. Avoid freeze / thaw cycles.
Stability:	Shelf life: one year from despatch.
Predicted Protein Size:	32kDa
Gene Name:	secretagogen, EF-hand calcium binding protein
Database Link:	Entrez Gene 10590 Human O76038
Background:	The encoded protein is a secreted calcium-binding protein which is found in the cytoplasm. It is related to calbindin D-28K and calretinin. This protein is thought to be involved in KCL-stimulated calcium flux and cell proliferation.
Synonyms:	calbindin-like; CALBL; DJ501N12.8; SECRET; secretagogen; SEGN; setagin



[View online »](#)

Product images:

Western blot analysis of extracts of various cell lines, using Secretagogin (Secretagogin (SCGN)) antibody (TA381283) at 1:3000 dilution. | Secondary antibody: HRP Goat Anti-Rabbit IgG (H+L) at 1:10000 dilution. | Lysates/proteins: 25ug per lane. | Blocking buffer: 3% nonfat dry milk in TBST. | Detection: ECL Basic Kit . | Exposure time: 90s.



Immunofluorescence analysis of L929 cells using Secretagogin (Secretagogin (SCGN)) antibody (TA381283) at dilution of 1:100. Blue: DAPI for nuclear staining.