

## Product datasheet for **TA381267S**

### **RBM16 (SCAF8) Rabbit Polyclonal Antibody**

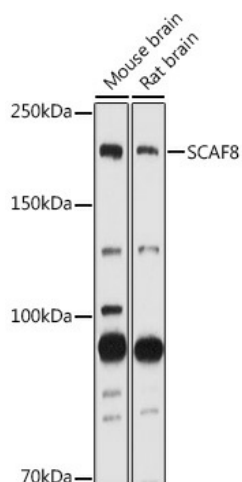
#### **Product data:**

Product Type:	Primary Antibodies
Applications:	ELISA, WB
Recommended Dilution:	WB, 1:500 - 1:1000 ELISA, Recommended starting concentration is 1 µg/mL. Please optimize the concentration based on your specific assay requirements.
Reactivity:	Human, Mouse, Rat
Modifications:	Unmodified
Host:	Rabbit
Isotype:	IgG
Clonality:	Polyclonal
Formulation:	Buffer: PBS with 0.02% sodium azide, 50% glycerol, pH 7.3.
Concentration:	lot specific
Purification:	Affinity purification
Conjugation:	Unconjugated
Storage:	Store at -20°C. Avoid freeze / thaw cycles.
Stability:	Shelf life: one year from despatch.
Predicted Protein Size:	141kDa
Gene Name:	SR-related CTD associated factor 8
Database Link:	<a href="#">Entrez Gene 22828 Human</a> <a href="#">Q9UPN6</a>
Background:	Enables RNA binding activity and RNA polymerase II C-terminal domain phosphoserine binding activity. Involved in negative regulation of termination of RNA polymerase II transcription, poly(A)-coupled and positive regulation of DNA-templated transcription, elongation. Located in nucleoplasm.
Synonyms:	A630086M08Rik; A930036P18Rik; AA408306; AI447644; AI448652; AU015035; mKIAA1116; Rbm16

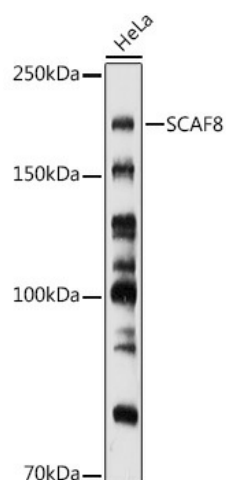


[View online »](#)

## Product images:



Western blot analysis of various lysates using SCAF8 Rabbit pAb (TA381267S) at 1:1000 dilution. Secondary antibody: HRP-conjugated Goat anti-Rabbit IgG (H+L) (AS014) at 1:10000 dilution. Lysates/proteins: 25µg per lane. Blocking buffer: 3% nonfat dry milk in TBST. Detection: ECL Basic Kit (RM00020). Exposure time: 30s.



Western blot analysis of lysates from HeLa cells