

Product datasheet for **TA381267**

RBM16 (SCAF8) Rabbit Polyclonal Antibody

Product data:

Product Type:	Primary Antibodies
Applications:	WB
Recommended Dilution:	WB,1:500 - 1:1000
Reactivity:	Human, Mouse, Rat
Modifications:	Unmodified
Host:	Rabbit
Isotype:	IgG
Clonality:	Polyclonal
Immunogen:	Recombinant protein of human SCAF8.
Formulation:	Buffer: PBS with 0.02% sodium azide,50% glycerol,pH7.3.
Concentration:	lot specific
Purification:	Affinity purification
Conjugation:	Unconjugated
Storage:	Store at -20°C. Avoid freeze / thaw cycles.
Stability:	Shelf life: one year from despatch.
Predicted Protein Size:	140kDa/147kDa
Gene Name:	SR-related CTD associated factor 8
Database Link:	Entrez Gene 22828 Human Q9UPN6

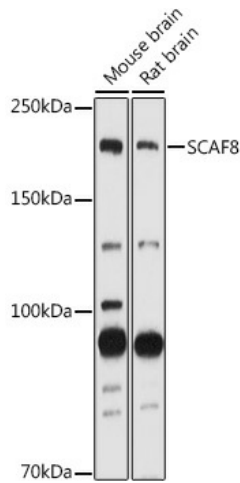
Background: Anti-terminator protein required to prevent early mRNA termination during transcription. Together with SCAF4, acts by suppressing the use of early, alternative poly(A sites, thereby preventing the accumulation of non-functional truncated proteins. Mechanistically, associates with the phosphorylated C-terminal heptapeptide repeat domain (CTD of the largest RNA polymerase II subunit (POLR2A, and subsequently binds nascent RNA upstream of early polyadenylation sites to prevent premature mRNA transcript cleavage and polyadenylation. Independently of SCAF4, also acts as a positive regulator of transcript elongation.



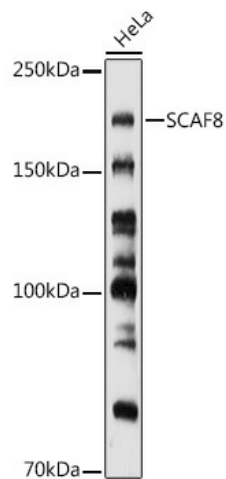
[View online »](#)

Synonyms: A630086M08Rik; A930036P18Rik; AA408306; AI447644; AI448652; AU015035; mKIAA1116; Rbm16

Product images:



Western blot analysis of extracts of various cell lines, using SCAF8 antibody (TA381267) at 1:1000 dilution. | Secondary antibody: HRP Goat Anti-Rabbit IgG (H+L) at 1:10000 dilution. | Lysates/proteins: 25ug per lane. | Blocking buffer: 3% nonfat dry milk in TBST. | Detection: ECL Basic Kit . | Exposure time: 30s.



Western blot analysis of extracts of HeLa cells, using SCAF8 antibody (TA381267) at 1:1000 dilution. | Secondary antibody: HRP Goat Anti-Rabbit IgG (H+L) at 1:10000 dilution. | Lysates/proteins: 25ug per lane. | Blocking buffer: 3% nonfat dry milk in TBST. | Detection: ECL Basic Kit . | Exposure time: 180s.