

Product datasheet for **TA381265S**

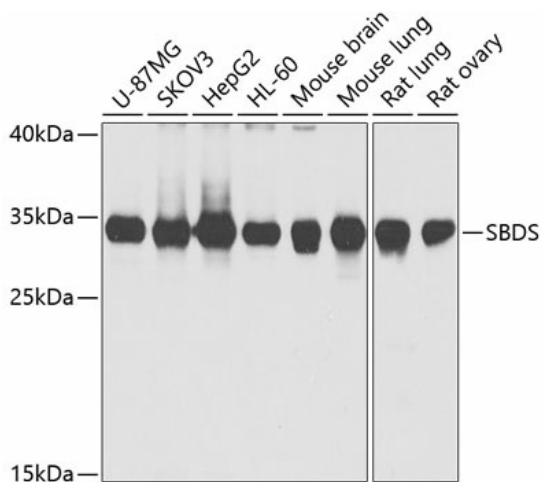
Shwachman Bodian Diamond syndrome (SBDS) Rabbit Polyclonal Antibody

Product data:

Product Type:	Primary Antibodies
Applications:	ELISA, WB
Recommended Dilution:	WB, 1:500 - 1:2000 ELISA, Recommended starting concentration is 1 µg/mL. Please optimize the concentration based on your specific assay requirements.
Reactivity:	Human, Mouse, Rat
Modifications:	Unmodified
Host:	Rabbit
Isotype:	IgG
Clonality:	Polyclonal
Formulation:	Buffer: PBS with 0.02% sodium azide, 50% glycerol, pH 7.3.
Concentration:	lot specific
Purification:	Affinity purification
Conjugation:	Unconjugated
Storage:	Store at -20°C. Avoid freeze / thaw cycles.
Stability:	Shelf life: one year from despatch.
Predicted Protein Size:	29kDa
Gene Name:	SBDS ribosome assembly guanine nucleotide exchange factor
Database Link:	Entrez Gene 51119 Human Q9Y3A5
Background:	This gene encodes a highly conserved protein that plays an essential role in ribosome biogenesis. The encoded protein interacts with elongation factor-like GTPase 1 to disassociate eukaryotic initiation factor 6 from the late cytoplasmic pre-60S ribosomal subunit allowing assembly of the 80S subunit. Mutations within this gene are associated with the autosomal recessive disorder Shwachman-Bodian-Diamond syndrome. This gene has a closely linked pseudogene that is distally located.
Synonyms:	CGI-97; FLJ10917; SDS; SWDS


[View online »](#)

Product images:



Western blot analysis of various lysates using SBDS Rabbit pAb (TA381265S) at 1:1000 dilution. Secondary antibody: HRP-conjugated Goat anti-Rabbit IgG (H+L) (AS014) at 1:10000 dilution. Lysates/proteins: 25µg per lane. Blocking buffer: 3% nonfat dry milk in TBST. Detection: ECL Basic Kit (RM00020). Exposure time: 15s.