

## Product datasheet for **TA381261**

### SAT2 Rabbit Polyclonal Antibody

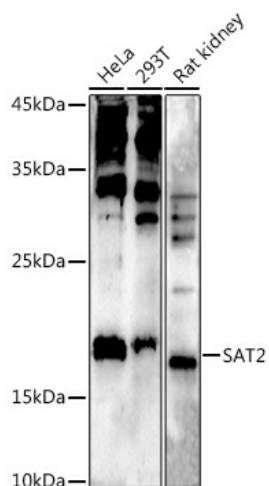
#### Product data:

Product Type:	Primary Antibodies
Applications:	IF, WB
Recommended Dilution:	WB,1:500 - 1:2000 IF,1:50 - 1:100
Reactivity:	Human, Mouse
Modifications:	Unmodified
Host:	Rabbit
Isotype:	IgG
Clonality:	Polyclonal
Immunogen:	Recombinant fusion protein containing a sequence corresponding to amino acids 1-170 of human SAT2 (NP_597998.1).
Formulation:	Buffer: PBS with 0.02% sodium azide,50% glycerol,pH7.3.
Concentration:	lot specific
Purification:	Affinity purification
Conjugation:	Unconjugated
Storage:	Store at -20°C. Avoid freeze / thaw cycles.
Stability:	Shelf life: one year from despatch.
Predicted Protein Size:	19kDa
Gene Name:	spermidine/spermine N1-acetyltransferase family member 2
Database Link:	<a href="#">Entrez Gene 112483 Human</a> <a href="#">Q96F10</a>
Background:	Catalyzes the N-acetylation of the amino acid thialysine (S-(2-aminoethyl-L-cysteine, a L-lysine analog with the 4-methylene group substituted with a sulfur. May also catalyze acetylation of polyamines, such as norspermidine, spermidine or spermine. However, ability to acetylate polyamines is weak, suggesting that it does not act as a diamine acetyltransferase in vivo.
Synonyms:	S; SSAT2



[View online »](#)

## Product images:



Western blot analysis of extracts of various cell lines, using (TA381261) at 1:500 dilution. | Secondary antibody: HRP Goat Anti-Rabbit IgG (H+L) at 1:10000 dilution. | Lysates/proteins: 25ug per lane. | Blocking buffer: 3% nonfat dry milk in TBST. | Detection: ECL Enhanced Kit . | Exposure time: 90s.