

Product datasheet for **TA381252S**

SARM (SARM1) Rabbit Polyclonal Antibody

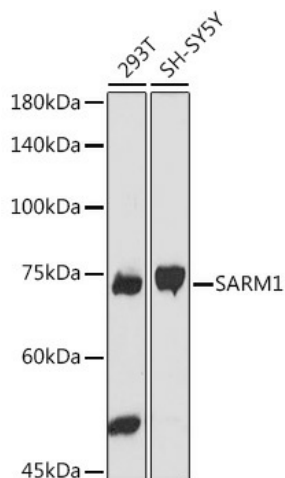
Product data:

Product Type:	Primary Antibodies
Applications:	ELISA, IP, WB
Recommended Dilution:	WB, 1:500 - 1:1000 IP, 0.5µg-4µg antibody for 200µg-400µg extracts of whole cells ELISA, Recommended starting concentration is 1 µg/mL. Please optimize the concentration based on your specific assay requirements.
Reactivity:	Human
Modifications:	Unmodified
Host:	Rabbit
Isotype:	IgG
Clonality:	Polyclonal
Formulation:	Buffer: PBS with 0.02% sodium azide, 50% glycerol, pH 7.3.
Concentration:	lot specific
Purification:	Affinity purification
Conjugation:	Unconjugated
Storage:	Store at -20°C. Avoid freeze / thaw cycles.
Stability:	Shelf life: one year from despatch.
Predicted Protein Size:	79kDa
Gene Name:	sterile alpha and TIR motif containing 1
Database Link:	Entrez Gene 23098 Human Q6SZW1
Background:	Enables NAD ⁺ nucleotidase, cyclic ADP-ribose generating and identical protein binding activity. Involved in NAD catabolic process; positive regulation of neuron death; and response to axon injury. Located in mitochondrion.
Synonyms:	FLJ36296; KIAA0524; SAMD2; SARM



[View online »](#)

Product images:



Western blot analysis of various lysates using SARM1 Rabbit pAb ([TA381252]) at 1:1000 dilution.

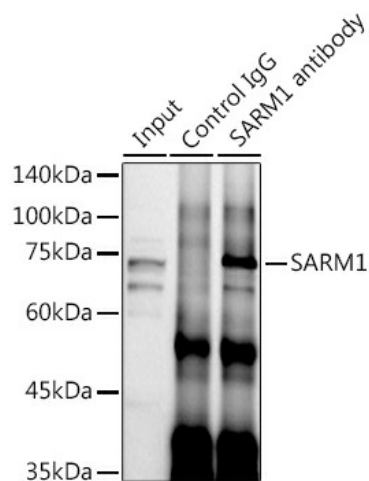
Secondary antibody: HRP-conjugated Goat anti-Rabbit IgG (H+L) (AS014) at 1:10000 dilution.

Lysates/proteins: 25µg per lane.

Blocking buffer: 3% nonfat dry milk in TBST.

Detection: ECL Basic Kit (RM00020).

Exposure time: 90s.



Immunoprecipitation analysis of 300 µg extracts of SH-SY5Y cells using 3 µg SARM1 antibody ([TA381252]). Western blot was performed from the immunoprecipitate using SARM1 antibody ([TA381252]) at a dilution of 1:1000.