

Product datasheet for **TA381252**

SARM (SARM1) Rabbit Polyclonal Antibody

Product data:

Product Type:	Primary Antibodies
Applications:	IP, WB
Recommended Dilution:	WB,1:500 - 1:2000 IP,1:50 - 1:200
Reactivity:	Human
Modifications:	Unmodified
Host:	Rabbit
Isotype:	IgG
Clonality:	Polyclonal
Immunogen:	Recombinant protein of human SARM1.
Formulation:	Buffer: PBS with 0.02% sodium azide,50% glycerol,pH7.3.
Concentration:	lot specific
Purification:	Affinity purification
Conjugation:	Unconjugated
Storage:	Store at -20°C. Avoid freeze / thaw cycles.
Stability:	Shelf life: one year from despatch.
Predicted Protein Size:	79kDa
Gene Name:	sterile alpha and TIR motif containing 1
Database Link:	Entrez Gene 23098 Human Q6SZW1



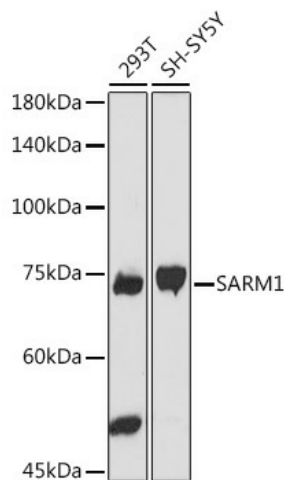
[View online »](#)

Background:

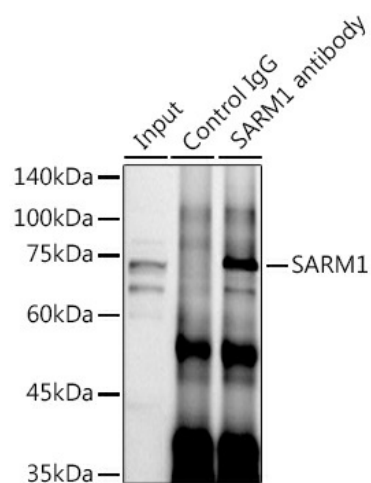
NAD(+) hydrolase, which plays a key role in axonal degeneration following injury by regulating NAD(+) metabolism. Acts as a negative regulator of MYD88- and TRIF-dependent toll-like receptor signaling pathway by promoting Wallerian degeneration, an injury-induced form of programmed subcellular death which involves degeneration of an axon distal to the injury site. Wallerian degeneration is triggered by NAD(+) depletion: in response to injury, SARM1 is activated and catalyzes cleavage of NAD(+) into ADP-D-ribose (ADPR, cyclic ADPR (cADPR and nicotinamide; NAD(+) cleavage promoting cytoskeletal degradation and axon destruction. Also able to hydrolyze NADP(+, but not other NAD(+)-related molecules. Can activate neuronal cell death in response to stress. Regulates dendritic arborization through the MAPK4-JNK pathway (By similarity. Involved in innate immune response: inhibits both TICAM1/TRIF- and MYD88-dependent activation of JUN/AP-1, TRIF-dependent activation of NF-kappa-B and IRF3, and the phosphorylation of MAPK14/p38.

Synonyms:

FLJ36296; KIAA0524; SAMD2; SARM

Product images:

Western blot analysis of extracts of various cell lines, using SARM1 antibody (TA381252) at 1:1000 dilution. | Secondary antibody: HRP Goat Anti-Rabbit IgG (H+L) at 1:10000 dilution. | Lysates/proteins: 25ug per lane. | Blocking buffer: 3% nonfat dry milk in TBST. | Detection: ECL Basic Kit. | Exposure time: 90s.



Immunoprecipitation analysis of 300ug extracts of SH-SY5Y cells using 3ug SARM1 antibody (TA381252). Western blot was performed from the immunoprecipitate using SARM1 antibody (TA381252) at a dilution of 1:1000.