

Product datasheet for **TA381250**

SAR1 (SAR1A) Rabbit Polyclonal Antibody

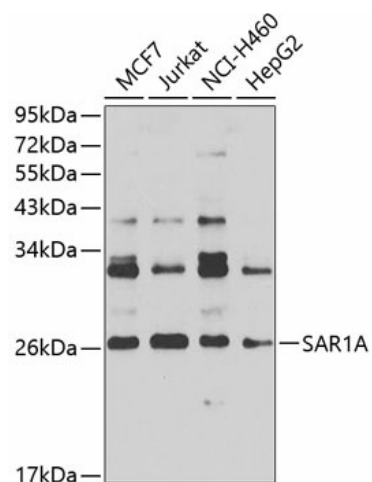
Product data:

Product Type:	Primary Antibodies
Applications:	WB
Recommended Dilution:	WB,1:500 - 1:2000
Reactivity:	Human, Rat
Modifications:	Unmodified
Host:	Rabbit
Isotype:	IgG
Clonality:	Polyclonal
Immunogen:	Recombinant fusion protein containing a sequence corresponding to amino acids 1-198 of human SAR1A (NP_064535.1).
Formulation:	Buffer: PBS with 0.02% sodium azide,50% glycerol,pH7.3.
Concentration:	lot specific
Purification:	Affinity purification
Conjugation:	Unconjugated
Storage:	Store at -20°C. Avoid freeze / thaw cycles.
Stability:	Shelf life: one year from despatch.
Predicted Protein Size:	17kDa/22kDa
Gene Name:	secretion associated Ras related GTPase 1A
Database Link:	Entrez Gene 56681 Human Q9NR31
Background:	Involved in transport from the endoplasmic reticulum to the Golgi apparatus (By similarity. Required to maintain SEC16A localization at discrete locations on the ER membrane perhaps by preventing its dissociation. SAR1A-GTP-dependent assembly of SEC16A on the ER membrane forms an organized scaffold defining endoplasmic reticulum exit sites (ERES).
Synonyms:	masra2; OTTHUMP00000019744; OTTHUMP00000019745; OTTHUMP00000019748; SAR1; Sara; SARA1



[View online »](#)

Product images:



Western blot analysis of extracts of various cell lines, using SAR1A antibody (TA381250) at 1:1000 dilution. | Secondary antibody: HRP Goat Anti-Rabbit IgG (H+L) at 1:10000 dilution. | Lysates/proteins: 25ug per lane. | Blocking buffer: 3% nonfat dry milk in TBST. | Detection: ECL Basic Kit . | Exposure time: 30s.