

Product datasheet for TA381245S

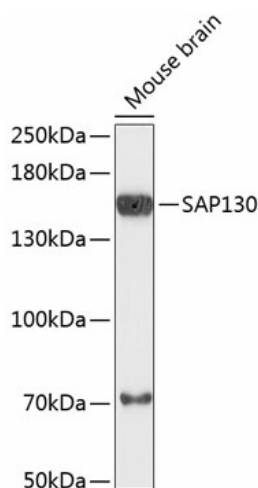
SAP130 Rabbit Polyclonal Antibody

Product data:

Product Type:	Primary Antibodies
Applications:	ELISA, WB
Recommended Dilution:	WB, 1:500 - 1:2000 ELISA, Recommended starting concentration is 1 µg/mL. Please optimize the concentration based on your specific assay requirements.
Reactivity:	Mouse
Modifications:	Unmodified
Host:	Rabbit
Isotype:	IgG
Clonality:	Polyclonal
Formulation:	Buffer: PBS with 0.02% sodium azide, 50% glycerol, pH 7.3.
Concentration:	lot specific
Purification:	Affinity purification
Conjugation:	Unconjugated
Storage:	Store at -20°C. Avoid freeze / thaw cycles.
Stability:	Shelf life: one year from despatch.
Predicted Protein Size:	110kDa
Gene Name:	Sin3A associated protein 130kDa
Database Link:	Q9H0E3
Background:	SAP130 is a subunit of the histone deacetylase (see HDAC1; MIM 601241)-dependent SIN3A (MIM 607776) corepressor complex (Fleischer et al., 2003 [PubMed 12724404]).
Synonyms:	FLJ12761


[View online »](#)

Product images:



Western blot analysis of lysates from mouse brain