

## Product datasheet for **TA381244**

### SAMM50 Rabbit Polyclonal Antibody

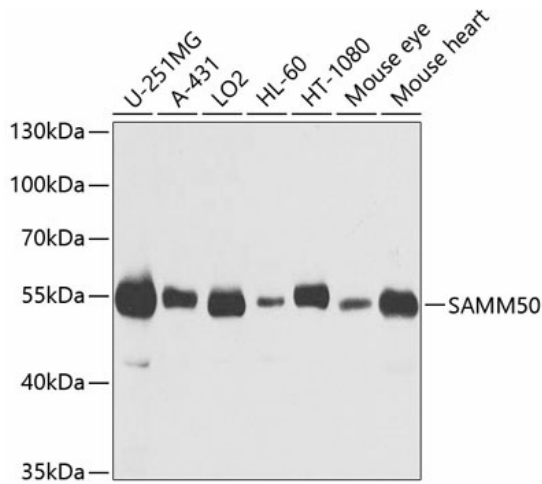
#### Product data:

Product Type:	Primary Antibodies
Applications:	IHC, IP, WB
Recommended Dilution:	WB,1:500 - 1:2000 IHC,1:50 - 1:200 IP,1:50 - 1:200
Reactivity:	Human, Mouse, Rat
Modifications:	Unmodified
Host:	Rabbit
Isotype:	IgG
Clonality:	Polyclonal
Immunogen:	Recombinant fusion protein containing a sequence corresponding to amino acids 1-220 of human SAMM50 (NP_056195.3).
Formulation:	Buffer: PBS with 0.02% sodium azide,50% glycerol,pH7.3.
Concentration:	lot specific
Purification:	Affinity purification
Conjugation:	Unconjugated
Storage:	Store at -20°C. Avoid freeze / thaw cycles.
Stability:	Shelf life: one year from despatch.
Predicted Protein Size:	51kDa
Gene Name:	SAMM50 sorting and assembly machinery component
Database Link:	<a href="#">Entrez Gene 25813 Human Q9Y512</a>
Background:	This gene encodes a component of the Sorting and Assembly Machinery (SAM) of the mitochondrial outer membrane. The Sam complex functions in the assembly of beta-barrel proteins into the outer mitochondrial membrane.
Synonyms:	CGI-51; FLJ35825; FLJ42905; FLJ99036; OMP85; SAM50; TOB55; TRG-3; YNL026W

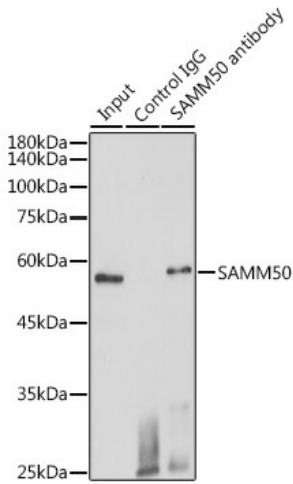


[View online »](#)

**Product images:**



Western blot analysis of extracts of various cell lines, using SAMM50 antibody (TA381244) at 1:1000 dilution. | Secondary antibody: HRP Goat Anti-Rabbit IgG (H+L) at 1:10000 dilution. | Lysates/proteins: 25ug per lane. | Blocking buffer: 3% nonfat dry milk in TBST. | Detection: ECL Basic Kit . | Exposure time: 30s.



Immunoprecipitation analysis of 600ug extracts of Mouse heart cells using 3ug SAMM50 antibody (TA381244). Western blot was performed from the immunoprecipitate using SAMM50 antibody (TA381244) at a dilution of 1:1000.