

## Product datasheet for **TA381243S**

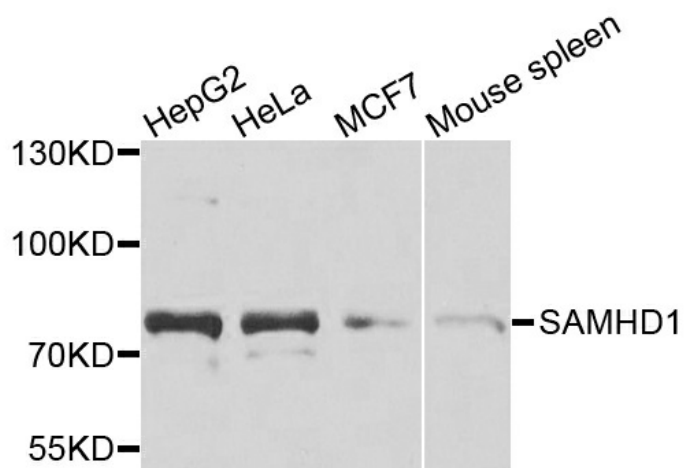
### **SAMHD1 Rabbit Polyclonal Antibody**

#### **Product data:**

Product Type:	Primary Antibodies
Applications:	ELISA, IHC, IP, WB
Recommended Dilution:	WB, 1:500 - 1:2000 IHC-P, 1:50 - 1:200 IP, 0.5µg-4µg antibody for 200µg-400µg extracts of whole cells ELISA, Recommended starting concentration is 1 µg/mL. Please optimize the concentration based on your specific assay requirements.
Reactivity:	Human, Mouse, Rat
Modifications:	Unmodified
Host:	Rabbit
Isotype:	IgG
Clonality:	Polyclonal
Formulation:	Buffer: PBS with 0.02% sodium azide, 50% glycerol, pH7.3.
Concentration:	lot specific
Purification:	Affinity purification
Conjugation:	Unconjugated
Storage:	Store at -20°C. Avoid freeze / thaw cycles.
Stability:	Shelf life: one year from despatch.
Predicted Protein Size:	72kDa
Gene Name:	SAM and HD domain containing deoxynucleoside triphosphate triphosphohydrolase 1
Database Link:	<a href="#">Entrez Gene 25939 Human Q9Y3Z3</a>
Background:	This gene may play a role in regulation of the innate immune response. The encoded protein is upregulated in response to viral infection and may be involved in mediation of tumor necrosis factor-alpha proinflammatory responses. Mutations in this gene have been associated with Aicardi-Goutieres syndrome.
Synonyms:	AGS5; DCIP; HDDC1; Mg11; MOP-5; MOP5; SBBI88



[View online »](#)

**Product images:**


Western blot analysis of various lysates using [KO Validated] SAMHD1 Rabbit pAb ([TA381243]) at 1:1000 dilution.

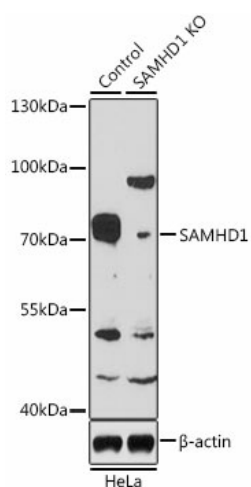
Secondary antibody: HRP-conjugated Goat anti-Rabbit IgG (H+L) (AS014) at 1:10000 dilution.

Lysates/proteins: 25µg per lane.

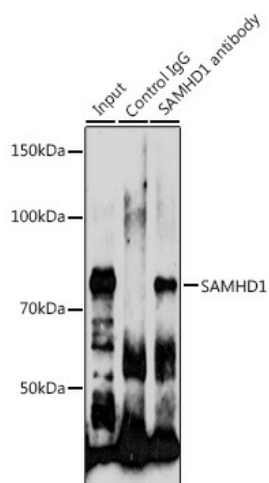
Blocking buffer: 3% nonfat dry milk in TBST.

Detection: ECL Basic Kit (RM00020).

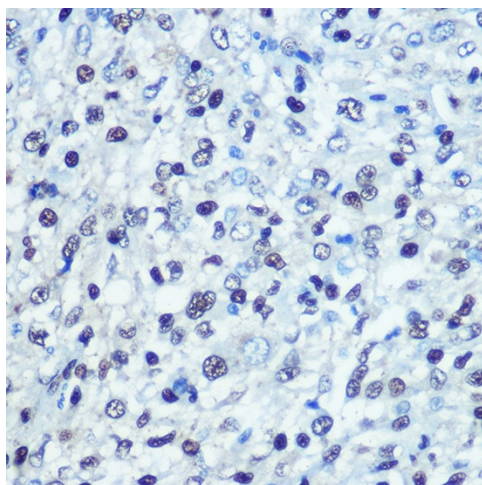
Exposure time: 90s.



Western blot analysis of lysates from wild type (WT) and SAMHD1 knockout (KO) HeLa cells



Immunoprecipitation analysis of 200 µg extracts of HeLa cells using 3 µg SAMHD1 antibody ([TA381243]). Western blot was performed from the immunoprecipitate using SAMHD1 antibody ([TA381243]) at a dilution of 1:1000.



Immunohistochemistry analysis of paraffin-embedded Human liver cancer using [KO Validated] SAMHD1 Rabbit pAb ([TA381243]) at dilution of 1:100 (40x lens). Microwave antigen retrieval performed with 0.01M PBS Buffer (pH 7.2) prior to IHC staining.