

Product datasheet for **TA381242S**

SAMD3 Rabbit Polyclonal Antibody

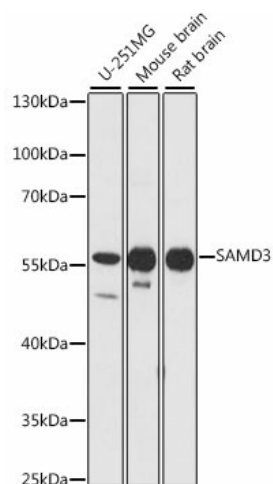
Product data:

Product Type:	Primary Antibodies
Applications:	ELISA, WB
Recommended Dilution:	WB, 1:500 - 1:2000 ELISA, Recommended starting concentration is 1 µg/mL. Please optimize the concentration based on your specific assay requirements.
Reactivity:	Human, Mouse, Rat
Modifications:	Unmodified
Host:	Rabbit
Isotype:	IgG
Clonality:	Polyclonal
Formulation:	Buffer: PBS with 0.02% sodium azide, 50% glycerol, pH 7.3.
Concentration:	lot specific
Purification:	Affinity purification
Conjugation:	Unconjugated
Storage:	Store at -20°C. Avoid freeze / thaw cycles.
Stability:	Shelf life: one year from despatch.
Predicted Protein Size:	61kDa
Gene Name:	sterile alpha motif domain containing 3
Database Link:	Entrez Gene 154075 Human Q8N6K7
Background:	SAMD3 (Sterile Alpha Motif Domain Containing 3) is a Protein Coding gene. Diseases associated with SAMD3 include Diaphyseal Medullary Stenosis With Malignant Fibrous Histiocytoma. An important paralog of this gene is CNKSR2.
Synonyms:	bA73O6.2; FLJ34032; FLJ34563; MGC35163



[View online »](#)

Product images:



Western blot analysis of various lysates using SAMD3 Rabbit pAb (TA381242) at 1:1000 dilution.

Secondary antibody: HRP-conjugated Goat anti-Rabbit IgG (H+L) (AS014) at 1:10000 dilution.

Lysates/proteins: 25µg per lane.

Blocking buffer: 3% nonfat dry milk in TBST.

Detection: ECL Basic Kit (RM00020).

Exposure time: 5s.